

Job: _____
Engineer: _____
Contractor: _____
Prepared By: _____ Date: _____
Model: _____ Indoor/Outdoor: _____

XTherm™ - Type WHP

Pool Heaters
Models 1005-2005

97% Thermal Efficiency at Full Rate; Up to 99% at Part Load

100% Factory Fire Tested

Maximum Outlet Water Temperature: 160°F

Minimum Acceptable Inlet Water Temperature: 50°F

Full Safety Diagnostics with History

Footprint: Less Than 10.8 ft²

Limited Twenty-Five-Year Thermal Shock Warranty

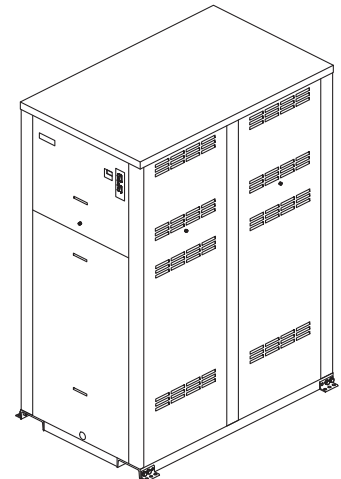
Limited Ten-Year Primary Heat Exchanger Warranty

Limited Five-Year Secondary Heat Exchanger Warranty

Full Electronic Modulation, Constant Ratio 4:1 Turndown

Digital Controller with LCD Display

Status Display Lights



Proudly Made in the USA

Heat Exchanger

- Bronze Headers
- ASME HLW Stamped; 160 PSIG MAWP
- National Board Listed
- Cupro Nickel Fin Tubing
- ASME Powder-Coated Tube Sheet
- Silicone High Temp O-Rings
- ASME Pressure Relief Valve 125 PSIG – Standard (Loose)
- 150 PSI Air Vent, Auto
- T&P Gauge (Loose)
- Stainless Steel Secondary Heat Exchanger
- Stainless Steel Evaporator Plate
- Boiler Pump: Bronze, 120V, 1Ø, 60Hz

Control

- 120V, 60Hz, 1Ø, Power Supply
- 120/24V 60Hz Transformer
- Ignition Module
 - ☐ 3-Try – Standard
 - ☐ Single-Try – Option C-6
- Hot Surface Ignition (HSI)
- Remote Flame Sensor
- High Limit Control, Auto Reset
- On/Off Power Switch
- Flow Switch
- Blocked Vent Pressure Switch
- Combustion Air Proving Switch
- Freeze Protection
- Pump Switch
- Alarm Dry Contact
- Pump Time Delay
- Blocked Condensate Switch

Control (cont.)

- Diagnostics Panel with LCD Display, 2 lines, 20 characters
- Digital Temperature Control
- Water Temperature Sensors (3)
- Cold Water Protection

Burner

- Ultra-Low NOx: Less than 20 PPM (Natural Gas Only)

Gas Train

- Fuel
 - ☐ Natural Gas
 - ☐ Propane
- Zero Governor Regulator
- Dual-Seat Combination Valve
- Electronic Firing Mode (WHP)

Construction

- Indoor/Outdoor Construction
- Front Controls Enclosed
- PolyTuf Powder Coat Finish
- Rear Connections (Water, Gas, Vent, Electrical, Comb. Air, Cond. Drain)
- Combustion Air Filter
- Design Certified ANSI Z21.10.3/CSA 4.3
- Front Connection Low Voltage Wiring

Venting

- Vent Termination, Cat IV
 - ☐ Outdoor or Indoor, Vertical – Option D-11
 - ☐ Indoor, Horizontal – Option D-15
- Extractor – Optional, Cat II
 - ☐ By others
 - ☐ Not required

Multi-Heater Digital Temp Controllers

- ☐ B-36 TempTracker Mod+ Hybrid, 2-4 Pool Heaters
- ☐ B-37 TempTracker Mod+ Hybrid, 5-10 Pool Heaters
- ☐ B-38 TempTracker Mod+ Hybrid, 11-16 Pool Heater
- ☐ B-45 Multi-Mod Platinum, 2-4 Pool Heaters
- ☐ B-46 Multi-Mod Platinum EMS, 2-4 Pool Heaters
- ☐ B-47 Multi-Mod Platinum BACNet, 2-4 Pool Heaters
- ☐ B-48 Multi-Mod Expansion Module, 1-8 Additional Pool Heaters

Options

- ☐ D-32 PVC Vent Connection
- ☐ F-10 Low Water Cut-Off, Remote Probe
- ☐ I-5 High Limit, Manual Reset, Adj., 100-200°F
- ☐ S-1 Low Gas Pressure Switch, Manual Reset
- ☐ S-2 High Gas Pressure Switch, Manual Reset
- ☐ Z-12 Condensate Neutralizer Kit

Regulatory Agency Requirements

☐ _____



Raypak®
A Rheem® Company

XTherm – Type WHP

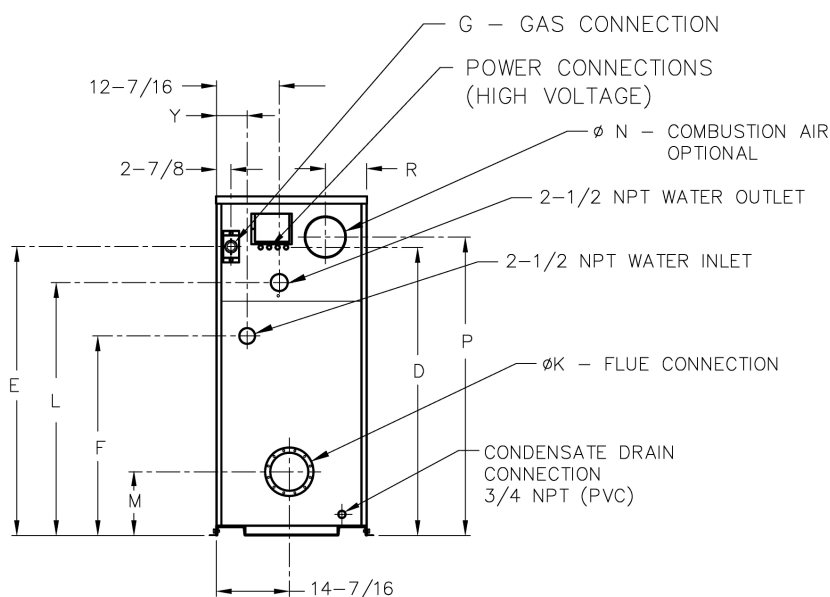
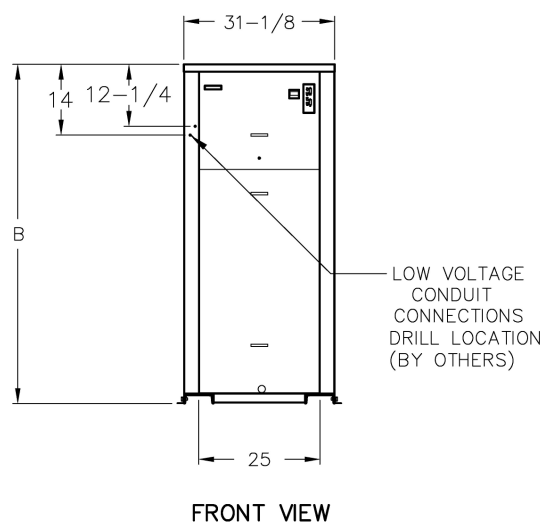
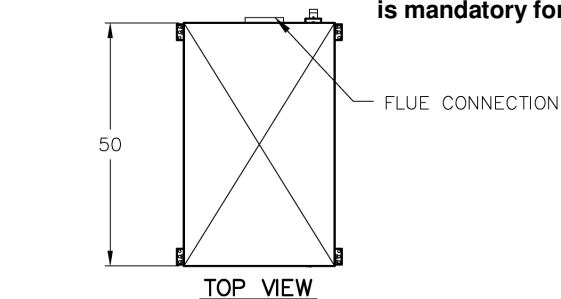
Models 1005-2005

Model _____

NOTE: Primary/Secondary plumbing is mandatory for proper operation.

CLEARANCES (in.)

| | Front | Rear | Right | Left | Top | Floor | Vent |
|--------------------------|-------|------|-------|------|-----|-------|------|
| Certified Minimum | 24 | 12 | 1 | 1 | 0 | 0 | 1 |
| Minimum Service | 24 | 36 | 24 | 1 | 10 | N/A | N/A |



| Model | Amp Draw** | |
|-------|------------|---------------|
| | Boiler † | Accessories † |
| 1005 | 12** | 10 |
| 1505 | 12** | 14 |
| 2005 | 18** | 17 |

† Separate power connections are factory supplied and separate supply breakers must be field supplied.
 ** Current draw is for boiler only (Supply breaker must have delayed trip).

| Model (WHP-) | MBTUH | | Dimensions (in) | | | | | | | | | | | Ship Weight (Lbs.) | |
|-----------------|-------|--------|-----------------|----|---------|--------|-----------|----------------|---------|--------|---------------|--------|--------|--------------------------|------|
| | Input | Output | B Height | D | E | F | G* NPT | K Flue Ø | L | M | N C/A Ø | P | R | | Y |
| 1005 | 999 | 969 | 55-1/8 | 45 | 47-1/8 | 36-1/2 | 1-1/4 | 6 | 40-1/16 | 11-1/2 | 6 | 47-1/8 | 8-1/16 | 6-1/16 | 1065 |
| 1505 | 1500 | 1455 | 67-1/8 | 57 | 59-1/16 | 38-1/2 | 1-1/4 | 8 | 52-1/16 | 12-5/8 | 8 | 59-1/8 | 8-3/16 | 6-1/16 | 1234 |
| 2005 | 1999 | 1939 | 81-1/8 | 71 | 71-3/16 | 38-1/2 | 2 | 8 | 64-1/16 | 12-5/8 | 8 | 73-1/8 | 8-3/16 | 6-1/4 | 1461 |

Note: Ratings shown are for elevations up to 4,500 feet. For installations at elevations above 4,500 feet, please consult the factory for additional instructions.

* For Propane Gas, all models are 1" NPT

| Model (WHP-) | RATES OF FLOW (GPM) | |
|--------------|---------------------|---------|
| | Maximum Flow | |
| | GPM | ΔT (°F) |
| 1005 | 113 | 17 |
| 1505 | 113 | 25 |
| 2005 | 116 | 33 |