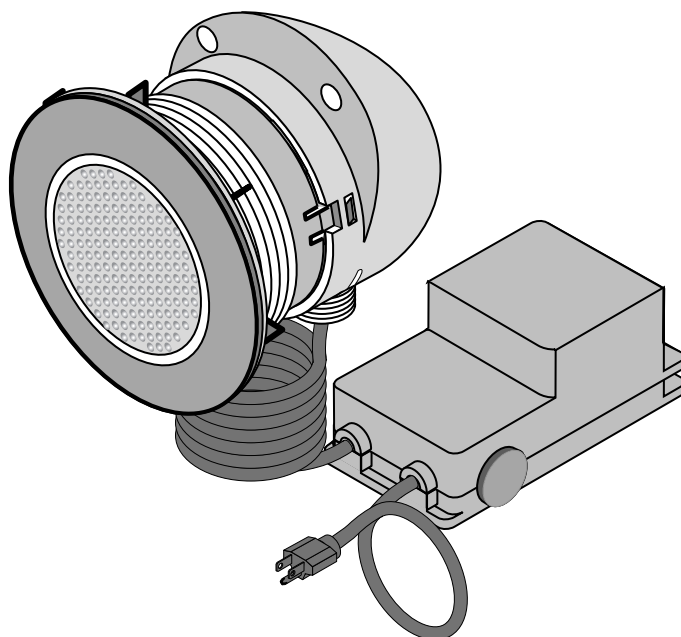


STA-RITE®

Sunstar™ Large Halogen Pool Lights For Above Ground Pools

O W N E R ' S M A N U A L



INSTALLATION, OPERATION & PARTS



This manual should be furnished to the end user of this light; its use will reduce service calls and chance of injury and will lengthen light life.

Sta-Rite Pool/Spa Group

293 Wright Street, Delavan, WI 53115

International: 262-728-5551, FAX: 262-728-7550

www.starite.com

Union City, TN • Delavan, WI • Mississauga, Ont. • Murrieta, CA

© 2004, Sta-Rite Industries

Printed in U.S.A.

S474 (Rev. 4/21/04)

READ AND FOLLOW SAFETY INSTRUCTIONS!

⚠ This is the safety alert symbol. When you see this symbol in this manual, look for one of the following signal words and be alert to the potential for personal injury.

⚠ DANGER warns about hazards that **will** cause serious personal injury, death or major property damage if ignored.

⚠ WARNING warns about hazards that **can** cause serious personal injury, death or major property damage if ignored.

⚠ CAUTION warns about hazards that **will** or **can** cause minor personal injury or property damage if ignored. The label **NOTICE** indicates special instructions which are important but not related to hazards.

Carefully read and follow all safety instructions in this manual and on equipment.

End user should save these instructions.

GENERAL SAFETY!

⚠ WARNING Hazardous voltage. Incorrectly installed or tested equipment may fail, causing severe injury or property damage. Read and follow instructions in owner's manual when installing and operating equipment. Have a trained pool professional perform all tests.

⚠ WARNING Risk of electrical shock. Before removing fixture from pool wall, ALWAYS TURN OFF THE POWER at the breaker.

Install this light and light niche in accordance with Article 680 of the National Electrical Code (NEC), in the United States, or Section 68 of the Canadian Electrical Code (CEC), as applicable, and all local code requirements. All 12 volt lamps require the installation of a 12 volt transformer.

All devices in the system must be directly grounded to a positive electrical ground. All devices in the system must meet all applicable code requirements for bonding. Installation and maintenance of this circuit, the light, light niche, transformer and any other accessories attached to the circuit, must be performed by a qualified, licensed electrician.

The complete electrical system must be installed, tested, and approved by a qualified, licensed electrician before it is placed in operation.

⚠ WARNING Breakage hazard. Install fixture in a vertical pool wall – not in floor. Failure to install the fixture properly could result in personal injury and/or property damage. Do not push off from the poolside against the light. Make sure that the installation is in compliance with local codes, the NEC (U.S.) electrical code, and the CEC (Canadian) electrical code, as applicable.

SPECIFICATIONS

Sunstar™ 12V, 50W Above Ground Pool Lights

Model	Volts	Watts	Cord Length in Ft. (m)
05103-0925	12	50	25 (7.6)
05103-0526	12	50	50 (15.2)
05103-1355	12	50	75 (22.8)

INSTALLATION

Lamp Housing Installation

Sunstar Lamp Housing Installation (For existing above ground pools only) Refer to Figure 1, Page 3 for Key Numbers.

Installation of a transformer is required, and included with this light. The transformer must be located:

- at least 10' from the pool wall,
- installed near a grounded, 3-prong, 120V, GFCI protected outlet. If you do not have a GFCI protected outlet, have a qualified electrician install one.

Do not use a 3-prong adapter. The adapter voids the grounding of the system.

Do not cut the grounding pin.

Do not use an extension cord! Purchase a light with a longer cord.

NOTICE: This light is NOT designed for IN-GROUND pools. For above ground pools only.

1. Be sure the power is off.
2. Lower the water level in the pool to at least 19" below the top of the pool.
3. Locate and mark a point on the inside of the pool 9" below the normal water level and 12" from a vertical stay.
4. Using a hammer and an awl or small screwdriver, punch a hole through both the liner and metal wall from the inside of the pool. Widen the hole until it will accept a 3/8" bolt.
NOTICE: Be certain the water level is at least 5" below the point where you are planning to put the hole. If water gets behind the pool liner, damage to your pool wall can occur.
5. From the outside of the pool, place the 3/8" bolt through the cup of the hole cutting tool. Push the bolt through the hole in the pool wall and from the inside of the pool, thread the cutter disc onto the bolt. Make sure the red side (cutting edge) of the disc is facing the liner.
6. Tighten the bolt until the disc is pulled completely through the liner and pool wall. Near completion of the cut, there will be only a small amount of metal supporting the cutter. Hold the cup firmly against the force of the wrench until the entire hole is cleanly cut.
7. Apply a clear varnish or shellac to the edge of the circular hole to prevent corrosion.
8. Place one of the rubber gaskets (Key No. 2) between the liner and pool wall. Place the other gasket on the lens barrel (Key No. 1).
NOTICE: Do not allow the gasket to slip down into the pool wall.
9. Place the lens barrel through the hole (from inside the pool) and into the gasket between the liner and the pool wall.
10. From outside the pool, place the large hex nut over the barrel of the lens housing and tighten it by hand. Be certain the two locking lugs on the lens barrel are parallel to the ground.
11. Slip the lamp housing over the barrel of the lens housing with the cord down, and snap-lock the two lugs on the barrel in the slots into the lamp housing.

12. Mount the transformer a minimum of 10' from the pool wall near a 120V, 3-prong outlet. Plug the transformer into the 120V, 3-prong outlet.

NOTICE: If you do not have a 3-prong outlet, have a qualified electrician install one for you.

- ⚠ WARNING** **Electrical shock hazard.** Shock can harm, burn or cause death. Do not use an extension cord!
13. Push the on/off switch inside the rubber boot on the side of the transformer to turn on your light fixture.

MAINTENANCE

Maintenance For Sunstar™ Lamps

See Figure 1 for reference numbers.

NOTE: This lamp is NOT designed for in-ground pools.

1. Be sure that the power is off. Allow the lamp to cool before relamping.
2. Slip the blade of a flat blade screwdriver under the locking lugs on the lens barrel (Key No. 1).
3. Pull the lamp housing off of the lens barrel.

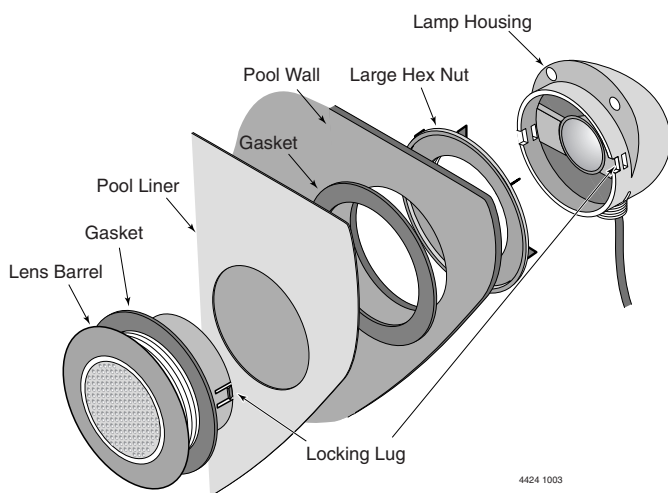


Figure 1 – Light and Gasket Assembly Order - Not To Scale

4. Using a clean soft lint free cloth, carefully wipe all sealing surfaces on the lamp housing and lens. Replace lamp with an equivalent to the original lamp.
NOTE: Do not touch lamp with bare fingers. If contact occurs, clean lamp glass with alcohol and a clean cloth.
5. Slip the lamp housing over the barrel of the lens housing with the cord down and snap lock the two lugs on the barrel into their corresponding slots in the lamp housing.

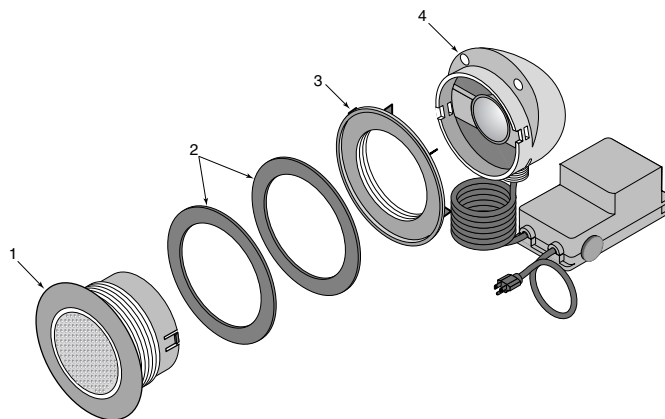


Figure 2 – Sunstar™ Lamp Exploded View

REPAIR PARTS LIST – SUNSTAR™ LAMPS

Key No.	Part Description	Qty.	05103 Series 12V, 60W
1	Lens Barrel	1	05103-0103
2	Gasket, for wall fitting	2	05103-0101
3	Large Hex Nut	1	05103-0001
4	Lamp Housing (includes transformer and cord)	1	†
	• Colored Gel Kit	1	05103-0102
	• 50W, 12V, Halogen Lamp	1	34600-0008

† Not sold separately

• Not illustrated

STA-RITE LIMITED WARRANTY

Pumps, filters, skimmers, underwater lights (except bulbs), accessories and fittings manufactured by Sta-Rite are warranted to be free of defects in material and workmanship for one (1) year from date of installation.

Product specific warranties:	Year from date of installation
------------------------------	--------------------------------

<i>HRPB, DEPB, System 3, System 2 and Posi-Clear</i>	
Tanks	10 years
Internal filter components and valves	1 year
<i>Max-E-Therm - Pool/Spa Heaters</i>	
Heater Enclosure only (Upper RH & LH; lower enclosure; and control board enclosure)...	10 years
<i>Automatic Pool Cleaners including Hose</i>	2 years
<i>Cristal-Flo filters - Tanks</i>	
Valve and internal components.	1 year
<i>Posi-Flo II - Tanks</i>	
Elements	1 year
<i>PRC Cartridge -</i>	
Filter Tanks5 years pro-rated (1st 2 years full)
Elements	1 year
<i>System 2 Above Ground Systems - Tanks</i>	
Pumps / Platform and Internals	1 year
<i>Pumps</i>	
When equipped with A.O. Smith 2-compartment motors (Does not include pumps sold as part of a systems package)	2 years
<i>Traps / In-Line Strainers</i>	1 year
<i>Vertical Commercial Filter - Tanks</i>	
Internals	1 year
<i>Horizontal Commercial Filter</i>	
Tanks5 years
(Years 6-9, Prorated declining 20%/year, Yr. 10 - 10%)	
Internals	1 year

* Full warranty coverage is in effect for one year after installation. The pro-rated warranty covers the *tank only* during the 2nd through 10th year after installation. The amount covered decreases by 10% each year. (ie., 2nd year 90% covered, 3rd year 80% covered, etc.).

The foregoing warranties relate to the original consumer purchaser ("Purchaser") only. Sta-Rite shall have the option to repair or replace the defective product, at its sole discretion. Purchasers must pay all labor and shipping charges necessary to replace the product covered by this warranty. Requests for warranty service must be made through the installing dealer. This warranty shall not apply to any product that has been subject to negligence, misapplication, improper installation or maintenance, or other circumstances which are not in Sta-Rite's direct control.

This warranty sets forth Sta-Rite's sole obligation and Purchaser's exclusive remedy for defective products.

STA-RITE SHALL NOT BE LIABLE FOR ANY CONSEQUENTIAL, INCIDENTAL OR CONTINGENT DAMAGES WHATSOEVER.

THE FOREGOING WARRANTIES ARE EXCLUSIVE AND IN LIEU OF ALL OTHER EXPRESS WARRANTIES. IMPLIED WARRANTIES, INCLUDING BUT NOT LIMITED TO THE IMPLIED WARRANTIES OF MERCHANTABILITY AND FITNESS FOR A PARTICULAR PURPOSE, SHALL NOT EXTEND BEYOND THE DURATION OF THE APPLICABLE EXPRESS WARRANTIES PROVIDED HEREIN.

Some states do not allow the exclusion or limitation of incidental or consequential damages or limitations on how long an implied warranty lasts, so the above limitations or exclusion may not apply to you. This warranty gives you specific legal rights and you may also have other rights which vary from state to state.

Supersedes all previous publications.

Sta-Rite Industries
293 Wright St., Delavan, WI 53115

▲ Retain Warranty Certificate (upper portion) in a safe and convenient location for your records.

DETACH HERE: Fill out bottom portion completely and mail within 10 days of purchase/installation to:

Sta-Rite, Attn: Warranty Dept., 293 Wright St., Delavan, WI 53115

STA-RITE®

Warranty Registration Card

Name _____

Address _____

City _____ State _____ Zip _____

Purchase Date _____

Product Purchased _____

☐ New installation ☐ Replacement

Type of Pool ☐ Inground ☐ Vinyl ☐ Fiberglass ☐ Gunite

Size of Pool _____

Years pool has been in service ☐ less than 1 ☐ 1-3 ☐ 3-5 ☐ 5-10

Purchased from:
 Company name _____

Address _____

City _____ State _____ Zip _____

Please send me more information on these other products from Sta-Rite.

☐ Pumps ☐ Filters ☐ Automatic Pool Cleaners
☐ Maintenance Equipment ☐ Test Strips
☐ Heaters