

Job: _____

Engineer: _____

Contractor: _____

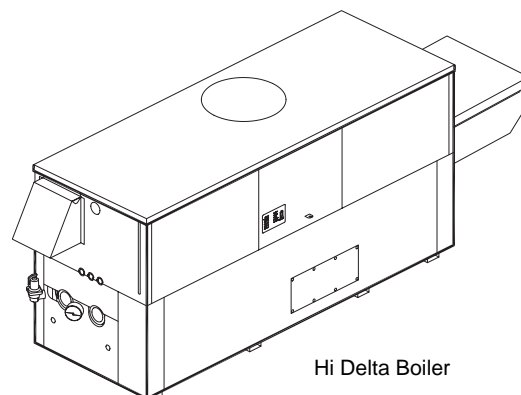
Prepared By: _____ Date: _____

Model: _____ Indoor/Outdoor: _____ MBTUH Input: _____

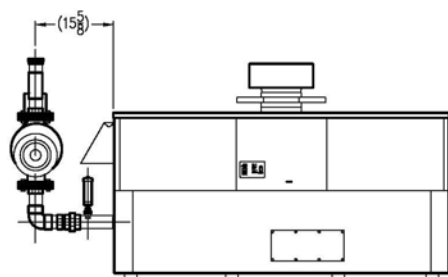
Cold Water Start

For Hi Delta®
Models 992B-2342B

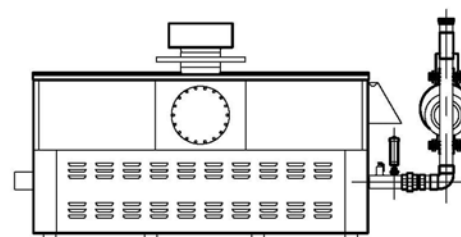
- ♦ 100% Factory Fire Tested System
- ♦ PID Control Logic
- ♦ Fail Safe Operation
- ♦ Spring Return Actuator
- ♦ Adjustable Inlet Temperature 100° - 120°F
- ♦ Microprocessor Start-up Sequence
- ♦ In-line Pump Available for Models 992B-2342B;
Integral Pump Available for Models 992B-1532B



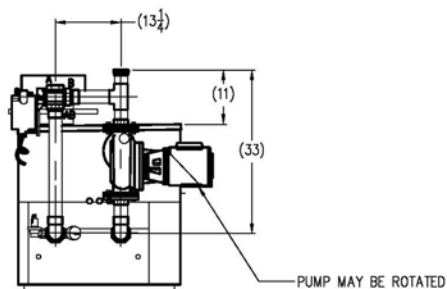
Inline Pump Models 992B - 2342B



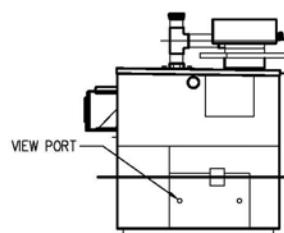
FRONT VIEW



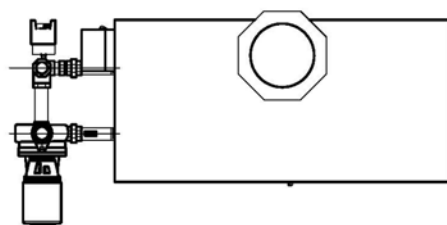
BACK VIEW



LEFT SIDE



RIGHT SIDE



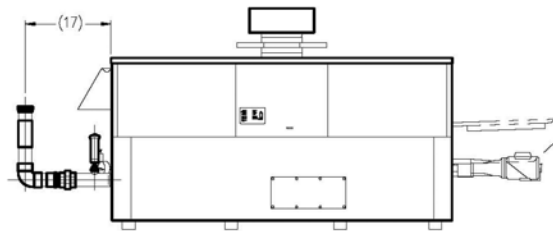
TOP VIEW

Raypak®
A Rheem® Company

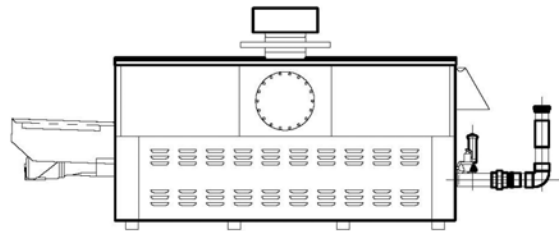
Cold Water Start For Hi Delta 992B-2342B

Model _____

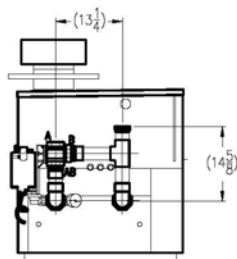
Integral Pump Models 992B - 1532B



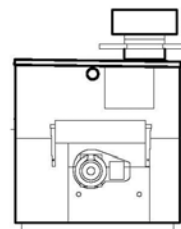
FRONT VIEW



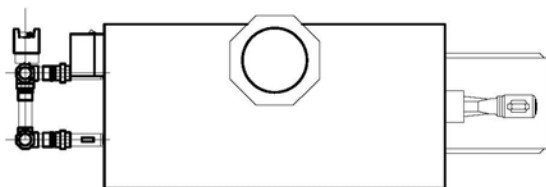
BACK VIEW



LEFT SIDE



RIGHT SIDE



TOP VIEW

See also Hi Delta submittals:
Models 992B-2342B – Catalog No. 2000.312
Models 992BE-2342BE – Catalog No. 2000.451

