

HOT WATER STORAGE TANKS

ASME CODE

STOCK

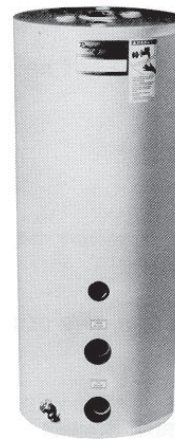
80 AND 115 GALLONS

APPLICATION

The tank can be installed whenever the demand requires stored water of 80 to 115 gallons. Whether installed individually or as several tanks in parallel, this tank can provide 80% draw without an appreciable temperature decrease in single-temperature applications.

FEATURES

- 80 and 115-gallon sizes
- ASME construction, standard
- 160 PSI maximum working pressure for 115-gal. tank
125 PSI maximum working pressure for 80-gal. tank
- Two magnesium anodes
- Meets ASHRAE 90.1
- L.A. City approved (application no. M-880057)
- Insulated and jacketed
- R-16 value insulation
- Foam insulation
- Five-year limited warranty
- Labels for each opening
- Large drain valve



80-gallon tank illustrated

CONSTRUCTION CODE

- Storage Tank - The tank is lined with a double coating of a high-temperature glass formula. It is built for long life under any water conditions. Two magnesium anode rods are factory-installed.
- R-Foam Insulation - Rigid polyurethane foam insulation protects against heat loss and saves fuel. The insulation is R-16 value and complies to ASHRAE 90.1.
- Steel Jacket - Complete unit is enclosed in baked enamel steel jacket. With minimum care, the jacket will remain attractive and colorful for years.
- Tank Openings - Circulating tank connections and hot water outlets are 2" NPT. Other openings are for T and P valve, tankstat, thermometer and drain port. (3/4" NPT drain valve is standard)
- Labels - Openings are individually labeled for easy identification.

SAMPLE SPECIFICATION

The hot water storage tank shall be a Raypak _____ gallon factory-insulated and -jacketed tank.

The tank shall have a double coating of a high-temperature glass lining and be equipped with two (2) magnesium anode rods. The tank shall be ASME constructed and designed for 160 PSI working pressure for 115-gal. tank and 125 PSI for 80-gal. tanks.

The tanks shall be insulated with rigid polyurethane that completely surrounds the tank and shall be enclosed in a baked enamel steel jacket. The tank insulation must be R-16 value and must meet or exceed ASHRAE standard 90.1. The tank shall be covered by a five-year limited warranty against corrosion.

Raypak®
A Rheem® Company

Stock ASME Code Tanks (80 and 115 Gallons)

TANK SPECIFICATIONS & DIMENSIONS

PART NO.	CAPACITY GALLONS	DIMENSIONS (IN.)							APPROX. SHIPPING WT. (LBS)
		A	B	C	D	E	F	H	
951118	80	2" NPT	58-5/8	24-7/16	20-3/16	13-3/16	6-3/16	53	255
951119	115	2" NPT	59-1/4	28-1/4	18-1/16	11-1/16	4-3/16	53	385

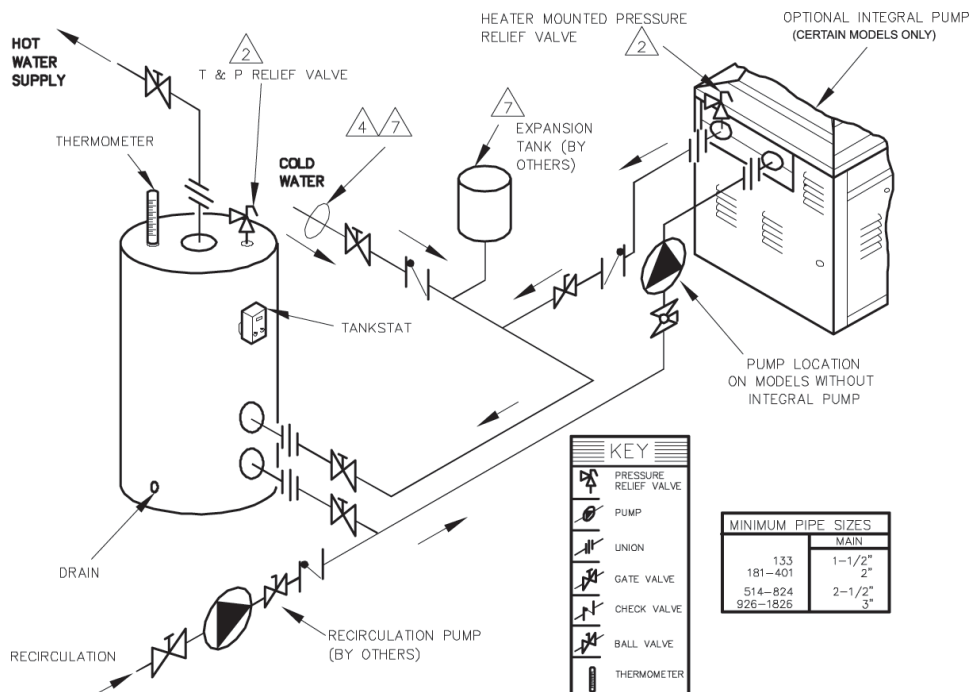
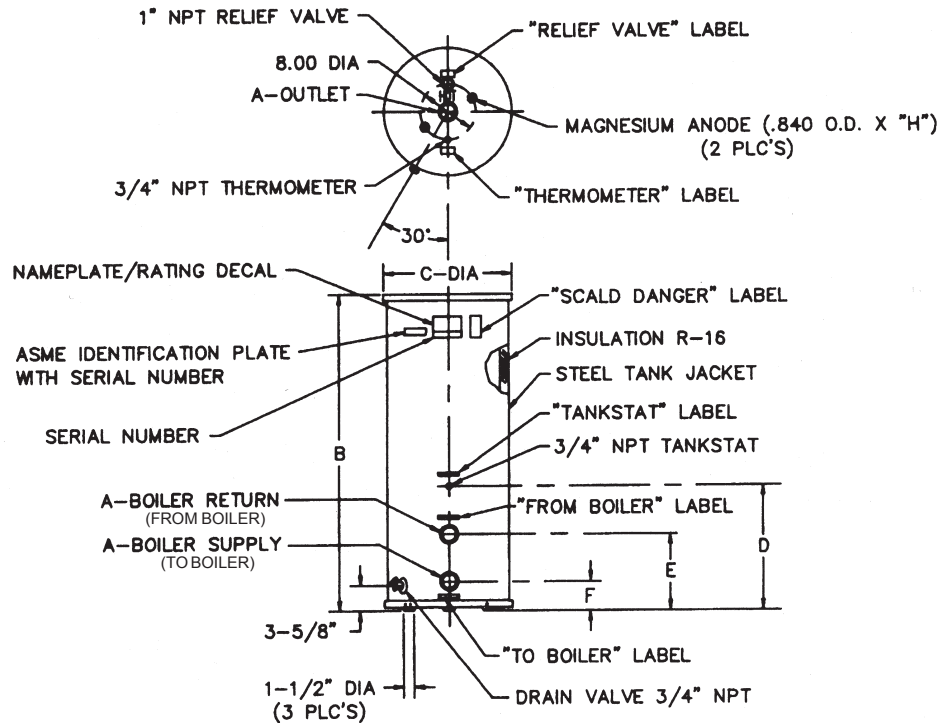


Fig. #8054