

Job: _____
Engineer: _____
Contractor: _____
Prepared By: _____ Date: _____
Model: _____

Raytherm® - Type WH

Water Heaters
Commercial

Models 962-1826 (Indoor)

EFFICIENT

- ▶ 82% thermal efficiency – highest of any atmospheric water heater available today

THERMAL SHOCK PROOF

- ▶ Twenty-year warranty against thermal shock damage up to 150°F differential
- ▶ Maximum operating temperature: 210°F

LIGHTWEIGHT

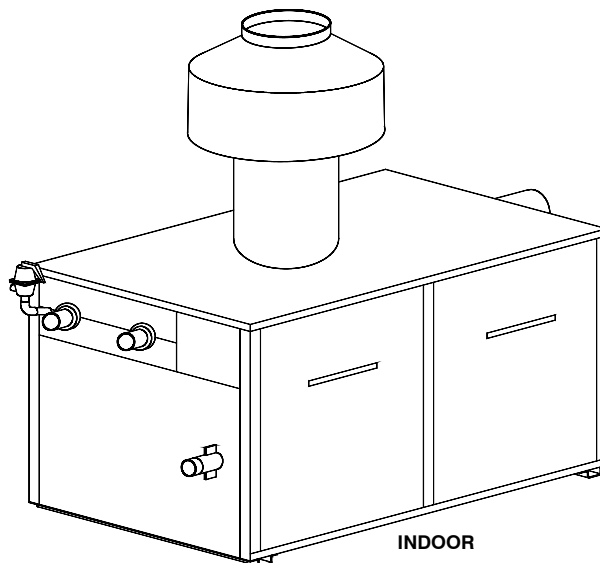
- ▶ A floor load of 70 lbs./sq. ft. or less

HIGH RECOVERY

- ▶ Cuts fuel costs substantially because the standby and radiation losses associated with tank-type water heaters are eliminated

LOW WATER OPERATING TEMPERATURE

- ▶ Operates with water temperature as low as 105°F without condensing



Heat Exchanger

- ASME Inspected and Stamped 160 PSIG
- National Board Approved
- Headers
 - ☐ Bronze – Standard
 - ☐ Glass-lined Cast Iron – Option A-2
- Fin Tubing
 - ☐ Copper – Standard
 - ☐ Cupro Nickel – Option A-3
- ASME Steel Tube Sheet
- Silicone O-Rings
- 125 PSIG ASME Pressure Relief Valve
- Temperature and Pressure Gauge
- Water Connections
 - ☐ Left Hand – Standard
 - ☐ Right Hand – Option A-6
- Two-pass Flow Configuration
- Pump, Rear-mounted, 1/2 HP, 120 VAC, 1Ø, 60 Hz – Optional
 - ☐ 4.25" Impeller
 - ☐ 4.7" Impeller

Controls

- 120V, 60Hz, 1 Ph Power Supply
- 120/24V Transformer
- 100% Pilot Shut-off/Lockout
- Electronic, Intermittent Ignition (IID) Pilot

Controls (cont.)

- High Limit Control, Manual Reset – 200°F
- On/Off Switch
- Flow Switch
- Economaster II Pump Time Delay

Gas Control Train

- Manual Main Gas Shut-off Cock
- Main Gas Pressure Regulator
- Redundant Safety Shut-off Valve
- Control Valve
- Firing Mode
 - ☐ On/Off
 - ☐ 2-stage Firing
 - ☐ Mechanical Modulation
- Fuel
 - ☐ Natural Gas
 - ☐ Propane Gas
- Design Certified ANSI Z21.10.3

Construction

- Front Controls
- Stainless Steel Burners
- PolyTuf Powder Coat Finish
- Vent Selection
 - ☐ Drafthood – Option D-10
 - ☐ Motorized Draft Inducer – Option D-2
- Base – Optional
 - ☐ Combustible Floor Shield – Option J-1

Temperature Controls

- ☐ B-2 Single-Stage Tankstat (100-180°F)
- ☐ B-3 2-Stage Tankstat (100-180°F)
- ☐ Y-241 Electronic Sequencer, 1-4 Stages
- ☐ Y-281 Electronic Sequencer, 1-8 Stages

Additional Safety Controls

- ☐ F-9 Low Water Cut-off Probe
- ☐ I-3 High Limit Control, Auto Reset, 180°F
- ☐ S-1 Low Gas Pressure Switch, Manual
- ☐ S-2 High Gas Pressure Switch, Manual

Regulatory Agency Requirements

- ☐ CSD-1 Safety Controls

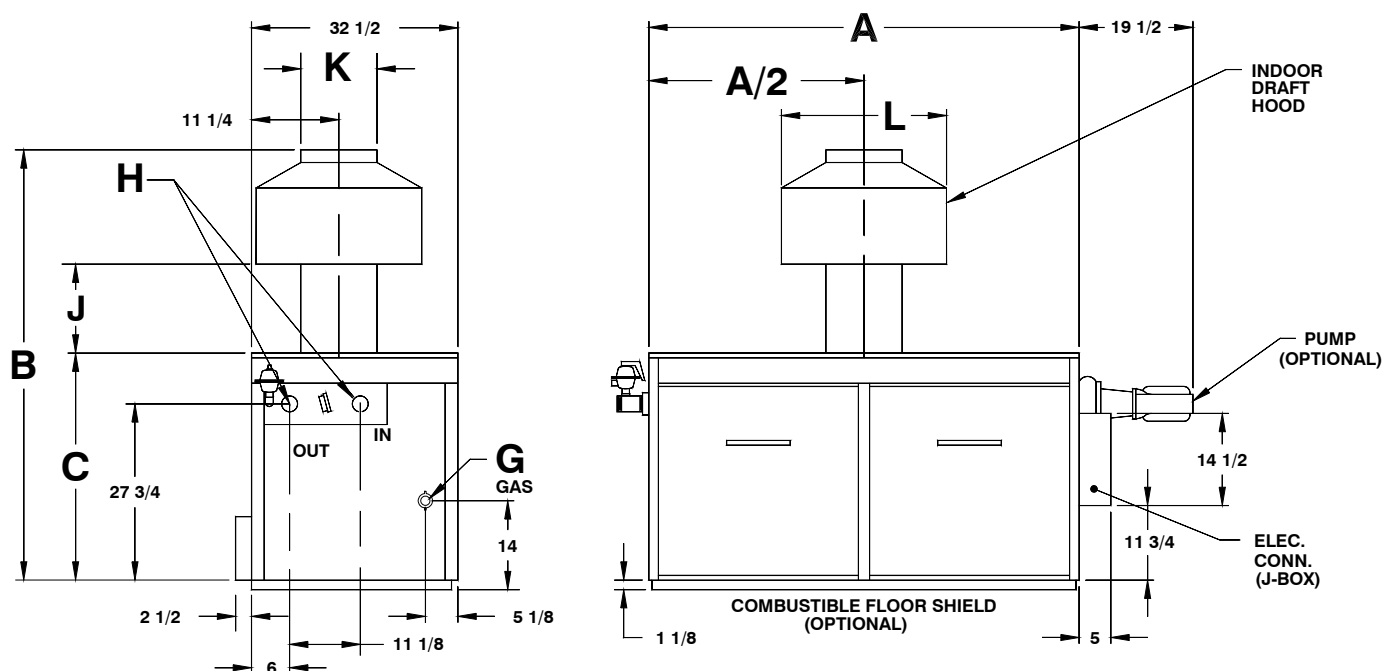


Raypak®
A Rheem® Company

Raytherm - Type WH

Models 962-1826

Model _____



MODELS 962 THRU 1826

Model No.	MBTUH Natural Gas		Dimensions (Inches)								Shipping Weight Lbs. (Approx.)	
			Width A	Overall Height B	Jacket Height C	Gas Conn. G	Water Conns. H	J	Flue Dia. K	L		
	Input	Output									Less Pump	w/Pump
WH-962	961.7	788.6	52-3/8	76-1/8	33-1/2	1	2-1/2	23-5/8	14	28	705	760
WH-1125	1124.7	922.0	59-1/4	78-1/8	33-1/2	1	2-1/2	23-5/8	16	32	745	800
WH-1223	1222.5	1002.4	63-5/8	78-1/8	33-1/2	1-1/4	2-1/2	23-5/8	16	32	805	860
WH-1336	1336.6	1096.0	68-5/8	80-1/8	33-1/2	1-1/4	2-1/2	23-5/8	18	36	875	930
WH-1468	1467.0	1203.0	74-7/8	80-1/8	33-1/2	1-1/4	2-1/2	23-5/8	18	36	945	1000
WH-1631	1630.0	1336.6	81-1/8	83-1/8	36-1/2	1-1/4	2-1/2	23-5/8	18	36	985	1040
WH-1826	1825.6	1497.0	89-3/8	85-1/8	36-1/2	1-1/4	2-1/2	23-5/8	20	40	1035	1090

NOTES: Ratings are shown for elevations up to 2,000 feet. For elevations over 2,000 feet, reduce ratings 4% for each 1,000 feet above sea level.

HEATER RATES OF FLOW AND PRESSURE DROPS

HEATER RECOVERY RATES (GPH)

Model No.	20° ΔT		30° ΔT		40° ΔT	
	GPM	ΔP (ft)	GPM	ΔP (ft)	GPM	ΔP (ft)
WH-962	79	8.5	53	3.8	N/A	N/A
WH-1125	N/A	N/A	61	5.5	46	3.1
WH-1223	N/A	N/A	67	7.0	50	3.9
WH-1336	N/A	N/A	73	8.6	55	4.9
WH-1468	N/A	N/A	80	11.0	60	6.2
WH-1631	N/A	N/A	90	14.8	67	8.0
WH-1826	N/A	N/A	N/A	N/A	75	10.6

Model No.	Temperature Rise						
	20°F	30°F	40°F	50°F	60°F	80°F	100°F
WH-962	4733	3156	2367	1893	1578	1183	947
WH-1125	5536	3690	2768	2214	1845	1384	1107
WH-1223	6017	4011	3009	2407	2006	11504	1203
WH-1336	6579	4386	3289	2631	2193	1645	1316
WH-1468	7221	4818	3610	2888	2407	1805	1444
WH-1631	8023	5349	4011	3209	2674	2006	1605
WH-1826	8986	5990	4493	3594	2995	2246	1797

NOTE: Maximum acceptable flow through heat exchanger tubes is 90GPM.

Raypak, Inc. ▪ 2151 Eastman Avenue, Oxnard, CA 93030 ▪ (805) 278-5300 ▪ Fax (800) 872-9725 ▪ www.raypak.com