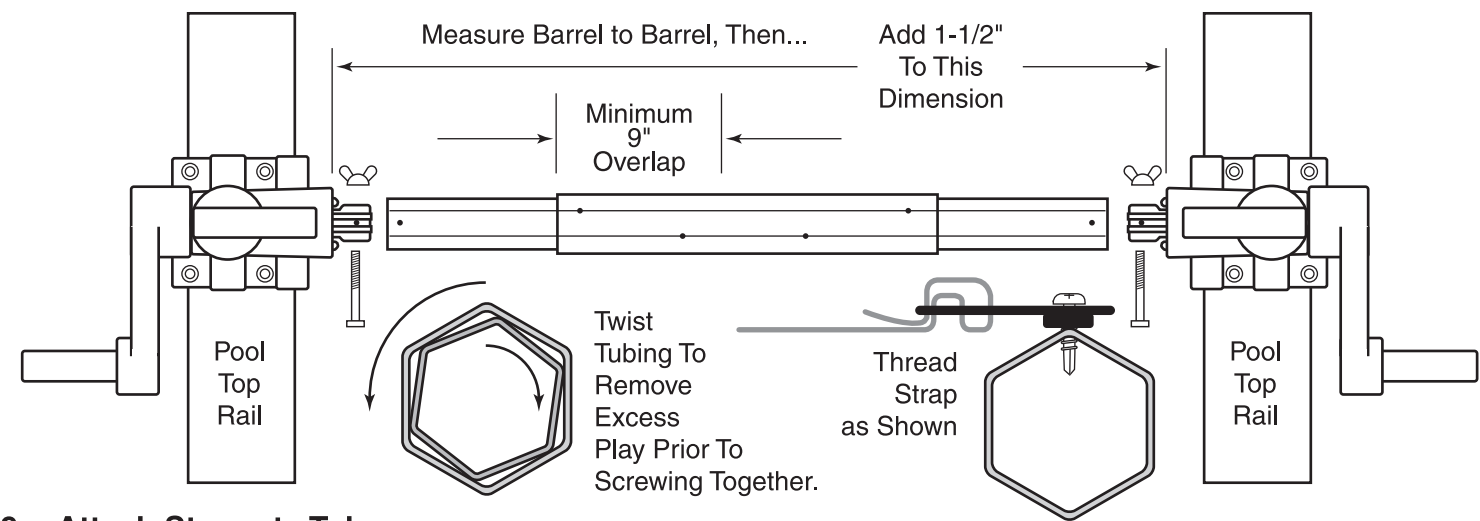


8. **Assembling The Cross Poles:**

All Tube Sets consist of 6 sided Hexagon shaped aluminum tubing. There are two sizes, of tubing 1-1/2" and 1-5/8", the smaller size nesting into the larger size. The smaller tubes are always the end tubes. The end tubes are sized to fit on the Crank and Axle End at either side of the pool. You will use a series of pre-drilled holes, spaced approximately 1-1/2" and 7-1/2" inches from each end, to join the large tubing to the small tubing. These holes are space 120 degrees apart. At appropriate time you will secure with self-drilling and taping SS screws. Also take note of large holes that pierce both end tubes. You will eventually use these holes to anchor tubing to Crank Axles with bolts provided.

- Loosely assemble extruded tubes together. Slide excess width into adjoining tubes, dividing it up as equally as possible. **Note: You must have a minimum of 9" of overlap in each tube!**
- Measure the width across the pool from barrel to barrel and add approximately 1-1/2" to the total.
- Adjust the total length of the tube assembly to fit the span plus the 1-1/2" inches.
- Lock the tubes together by rotating each adjoining tube in the opposite direction. (See illustrations)
- Secure each tube with just 1 self drilling screw in each adjoining tube.
- Attach the tube assembly into the barrels and check for fit.
- When all is OK drill and screw the remaining screws at each end of the overlapped poles. You should have 6 screws on each tube end where there is a connection.
- Assemble Tube assembly together with Barrels by lining up hole in the end of each tube fitted into Barrel and secure with plastic bolt and nut provided.

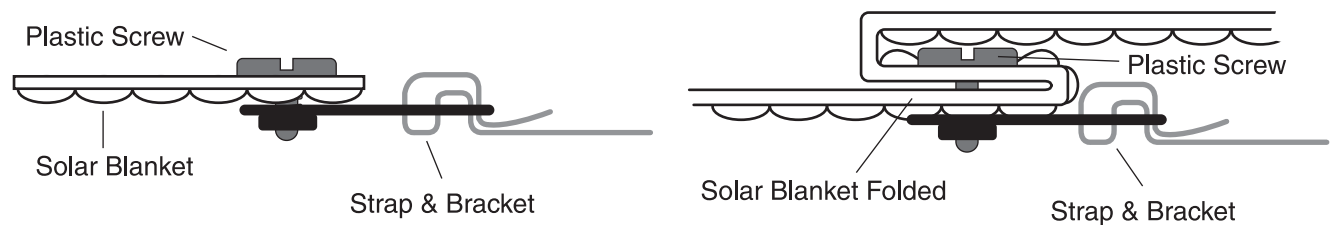


9. **Attach Straps to Tubes:**

Come in 6 inches from each tube end and attach a strap plate to the aluminum tube assembly. Use the self drilling screws on the drill line to attach the plate. Look at the holes that were pre-drilled at the factory and use the same drill line. There are 6 lines on each tube. Take the remaining strap plates and connect them evenly along the length of the tube assembly. Attach Straps to strap plate. (See Illustration Above Right)

10. **Attach Solar Blanket to Straps:**

If reel is to be located at the end of the pool, attach cover to strap plate with plastic screw as shown in Illustration Below Left. If reel is to be located offset or at the center of the pool then attach cover to strap plate forming a fold to act like a hinge and the plastic screw will go through two layers of the solar blanket as shown in Illustration Below Right. Bubbles should face down.



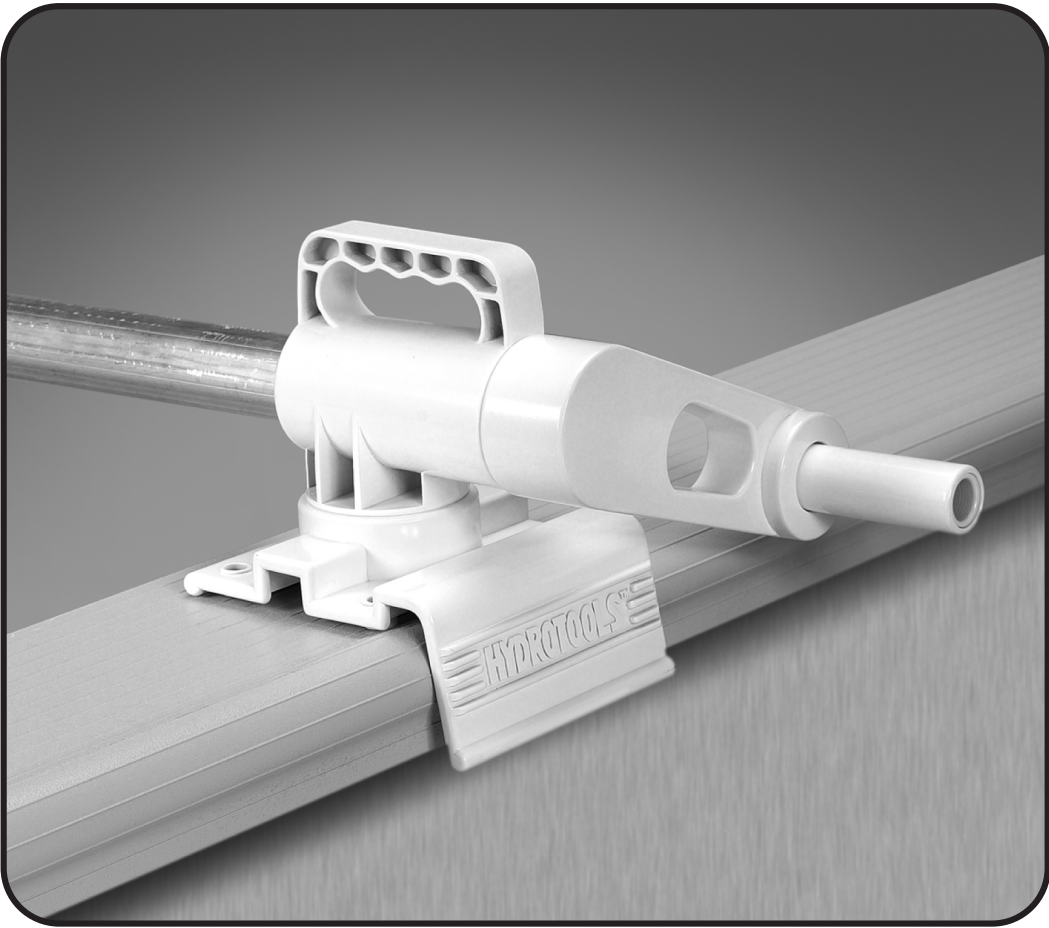
Item #5000 Instructions

SWIMLINE®

HYDROTOOLS™

Solar Reel™

Advanced Reel System
For Above Ground Solar Pool Covers



HYDROTOOLS
by ILP/Swimline

Edgewood, New York 11717 • www.swimline.com