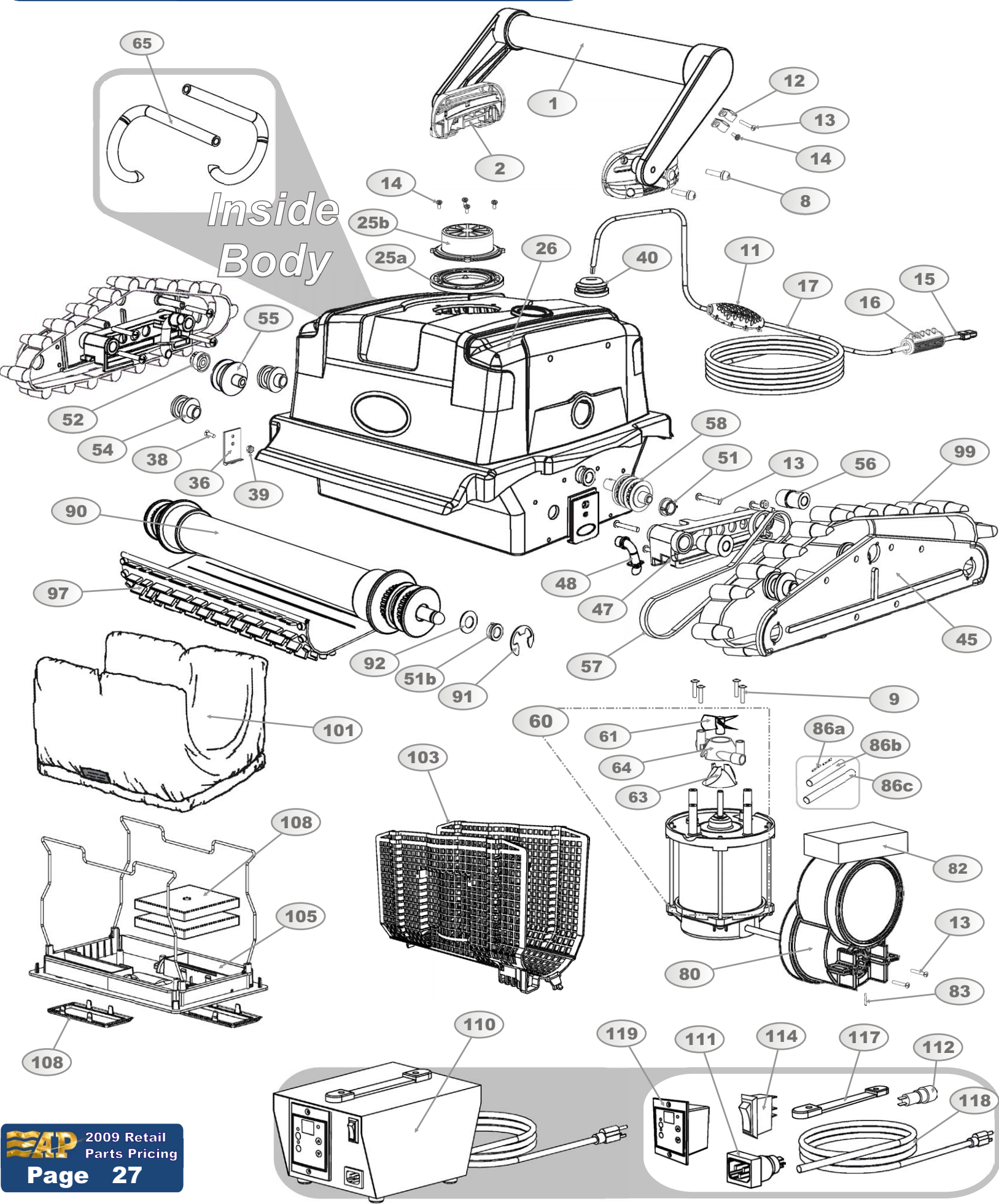


# Aquabot Turbo T



← IMAGE #	PART #	ITEM NAME ( Description ) - Quantity per	Aquabot Turbo T	UNITS	LIST PRICE
	1	A10000WT	HANDLE ASSEMBLY (Bright White, Brackets included) - 1 per machine	EACH	\$103.88
	2	A2039WT	HANDLE BRACKET (New design, Bright White) - 1 per machine	EACH	\$34.85
	8	1105	SCREW (10-32, 7/8", Phil Pan Head, fastens the Handle Bracket to the Body Assembly) - 4 per machine	EACH	\$1.27
	9	2701	SCREW (#8, 11/16", Phil Pan Head, to fasten Pump Motor to Body Assembly) - 4 per machine	EACH	\$1.27
	11	SP2031BL	CABLE PROTECTORS (Blue, Plastic, For preventing Cable from being pulled into wheels) - 1 set per machine	SET OF 3	\$9.98
	12	2109	P-CLIP (Blue, Coated Steel, fastens the insulated part of a Cable to the Handle Assy.) - 2 per machine	EACH	\$2.44
	13	2700	SCREW (#8, 11/16", Phil Pan-Flat Head, fastens P-Clip, Drive Motor and Sideplates) - 10 per machine	EACH	\$1.27
	14	2260	SCREW (#6, 7/16", Phil Pan-Flat Head, fastens P-Clips, Outlet Top, and H-Float) - 7 per machine	EACH	\$1.27
	15	1601	PLUG (3-Pin, Female, 2-Wire) - 1 per machine	EACH	\$14.63
	16	S7930	EZ-SWIVEL (For 2-wire Cable) - 1 per machine	ASSEMBLY	\$46.62
	17	A16261T	CABLE ASSEMBLY (2-Wire, 60 Ft., Floating) - 1 per machine	EACH	\$281.75
	25a	2250WT	OUTLET RING (Bright White, Ring only, does not include Top dome) - 1 per machine	EACH	\$9.12
	25b	2230WT1	OUTLET TOP (Bright White, Top dome only, does not include bottom Ring) - 1 per machine	EACH	\$21.18
	26	A2005BL1	BODY ASSEMBLY (Blue, with Lock Tabs, Pin, Outlet Ring, Inserts) - 1 per machine	EACH	\$138.65
	36	SP9204W	LOCK-TABS (White, Plastic) - 1 set per machine	SET OF 2	\$3.60
	38	2303	SCREW (18-8, 8/32" x 1/2", Phil Bev Head, fastens Lock-Tabs to the Body) - 2 per machine	EACH	\$1.27
	39	7133	LOCK-NUT (Nylon Insert, Hex, fastens the Screws of the Lock-Tabs) - 2 per machine	EACH	\$0.83
	40	1628	GROMMET (Rubber, Use around Cable Assembly on Body) - 1 per machine	EACH	\$2.44
	45	3400WT	SIDEPLATE (Bright White, Plastic) - 2 per machine	EACH	\$27.88
	47	3397WT	NOZZLE BRACKET (White, Supports Drive Track, holds Nozzle in place) - 2 per machine	EACH	\$5.83
	48	3398WT	NOZZLE (White, Snaps into Nozzle Bracket, connects to Poly Tubing for power washing under cleaner) - 2 per mac	EACH	\$5.83
	51a	2600	BUSHING (White, Plastic, For Pulley Assembly) - 2 per machine	EACH	\$2.76
	51b	2600BKT2	BUSHING (Black, Molybdenum polymer, For Wheeltube ends) - 4 per machine	EACH	\$2.76
	52	2610	BUSHING (White, Plastic, Use for Pin on Body Assembly) - 1 per machine	EACH	\$4.66
	55	3700	LARGE ROLLER (White, Plastic, Supports the Drive Track, installs on Body Assembly Pin) - 1 per machine	EACH	\$3.60
	56	3506	STEPPED SLEEVE ROLLER (White, Install on upper Sideplate legs, thick end supports Belts) - 2 per machine	EACH	\$2.76
	57	SP3302	DRIVE BELTS (Tan) - 1 pair per machine	PAIR	\$17.38
	58	A3605	PULLEY ASSEMBLY (2.75" long, includes 2 washers) - 1 per machine	EACH	\$33.81
	60	A600503	PUMP MOTOR (Includes Propeller, Impeller and Impeller Housing) - 1 per machine	EACH	\$213.79
	61	4402	PROPELLER (Black, Plastic, D-shaped insert) - 1 per machine	EACH	\$12.25
	63	6027	IMPELLER (Red) - 1 per machine	EACH	\$12.25
	64	6028	IMPELLER HOUSING (Red) - 1 per machine	EACH	\$12.25
	65	300096	TUBING (Clear PVC, 5/16"ID x 1/2"OD, channels water from the Impeller to the Nozzle Brackets) - 2 feet per machine	PER FOOT	\$1.10
	80	A8545	DRIVE MOTOR (Blue, bare wire leads) - 1 per machine	EACH	\$320.85
	82	3101	FLOAT (Place under Drive Motor) - 1 per machine	EACH	\$1.67
	86a	SP5474	SHRINKABLE BUTT CONNECTORS (Light Blue, crimp closed and heat shrink to seal) - 4 per machine	PAIR	\$2.54
	86b	SP1617	SHRINK TUBE (5/16" Wide, Black, Thin Rubber, For sealing electrical connections, Use under Shrink Tube 1619)	4 FEET	\$46.64
	86c	SP1619	SHRINK TUBE (1/2" Wide, Black, Thin Rubber, For sealing electrical connections, Use over Shrink Tube 1617)	4 FEET	\$46.64
	90	A38205MG	WHEEL TUBE ASSEMBLY (White, Plastic, uses 11058 Retaining Rings) - 2 per machine	EACH	\$69.94
	91	11058	RETAINING RING (E-Clip, Use on each end of the Wheel Tubes) - 4 per machine	EACH	\$3.67
	92	3603	WASHER (Nylon, Flat, for each end of each Wheel Tube) - 4 per machine	EACH	\$1.27
	97	SP3016BL	DEEPCLEAN SUPER BRUSHES (Blue, Short, includes Brush Pins) - 1 pair per machine	PAIR	\$77.89
	99	3203	DRIVE TRACK with TRACTION TABS (Blue) - 2 per machine	EACH	\$22.24
	101	8111	FILTER BAG (Small, Fine Filter Bag) - 1 per machine	EACH	\$48.97
	101	8112	FILTER BAG (Optional, Small, Mesh Filter Bag) - 1 per machine	EACH	\$46.75
	103	SP5310	FILTER SCREEN (Blue, Folding Cage with Attachment Strings) - 1 per machine	EACH	\$27.88
	105	A9600BL	BOTTOM LID ASSEMBLY (Blue, Shallow-W-Shaped Wire Frame) - 1 per machine	EACH	\$99.00
	108	SPK9600	FLOAT KIT (Optional, Floats, Screws, Extension Windows, Attach to Bottom Lid to quicken wall-climbing) - 1 set per	SET OF 4	\$15.35
	110	7098D	POWER SUPPLY (3-Prong, Male Socket, 7hr External Digital Timer) - 1 per machine	EACH	\$198.56
	111	7108	SOCKET ASSEMBLY (3-Pin, Male, 2-Wire) - 1 on Power Supply	EACH	\$10.49
	112	7206	FUSE HOLDER (Mini fuse, Phillips Head style) - 1 on Power Supply	EACH	\$8.14
		7207	FUSE (2.5 Amp, Mini fuse, 250 Volt, Slow- Blow) - 1 on Power Supply	EACH	\$3.07
	114	7105	LIGHTED SWITCH (Thin, 1 1/4" x 1/2", Red with Light, 3-Wire) - 1 on Power Supply	EACH	\$8.16
	114	7208	NON-LIGHTED SWITCH (Optional, Thin, 1 1/4" x 1/2", Red, 3-Wire) - 1 on Power Supply	EACH	\$8.16
	117	7041A	HANDLE (Soft Plastic, with Hardware) - 1 on Power Supply	ASSEMBLY	\$6.23
	118	7102	CORD FOR POWER SUPPLY (3-Wire, Green, Black, and White) - 1 on Power Supply	EACH	\$11.66
	119	7074D	DIGITAL TIMER (Front Digital display, 1-7 hours Adjustable, 8-minute auto-off-on) - 1 on Power Supply	EACH	\$52.47
	→	Parts marked with this symbol should be installed by the Factory or an Authorized Service Center. Otherwise a Warranty Waiver must accompany any order for these parts.			