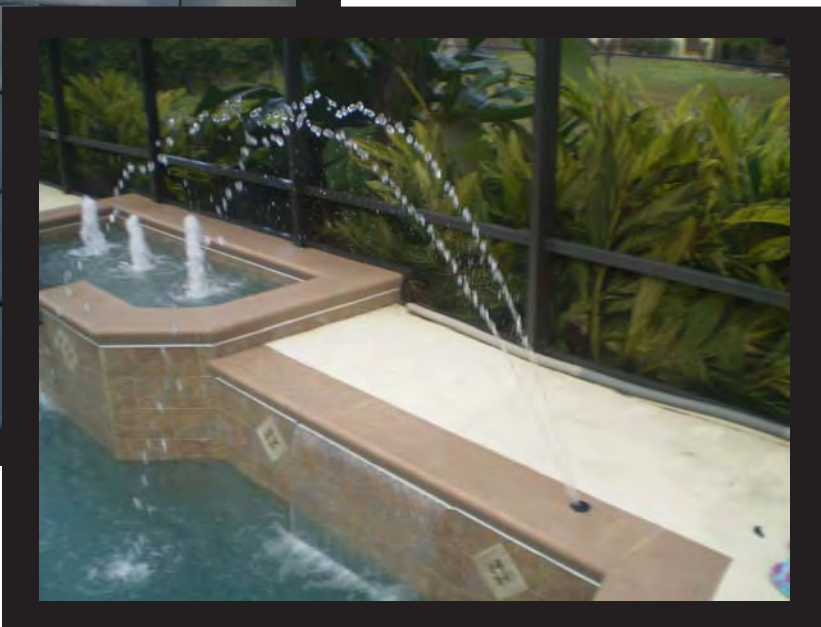
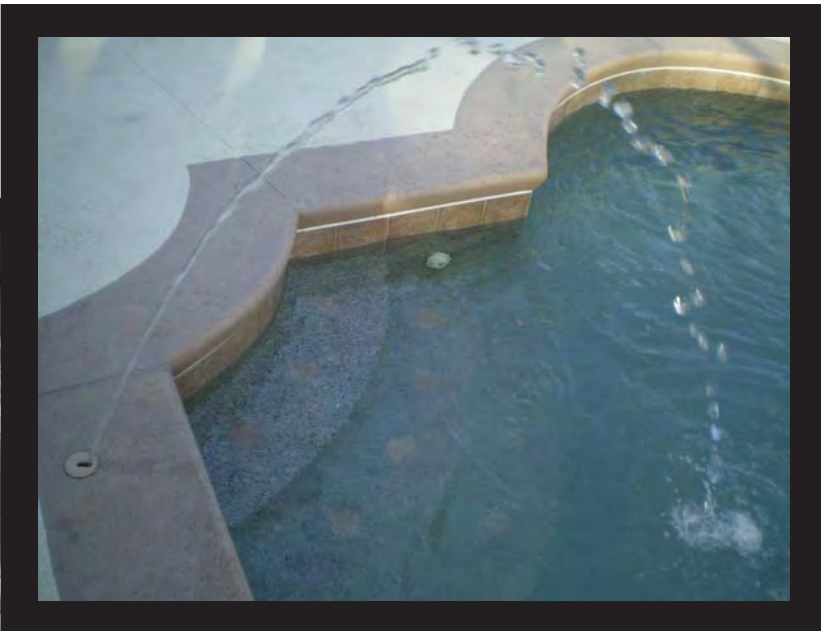


Deck & Wall Jets



Deck & Wall Jets

Deck Jets

Designed for residential and commercial pools, this water feature has an eyeball nozzle hidden from view by decorative cap. Four different cap colors are included with each deck jet. A variety of plumbing choices makes this deck jet easier to install. Only uses 3-5 GPM for a stream of water up to 10 feet high. Made for simple installation and trouble-free operation.

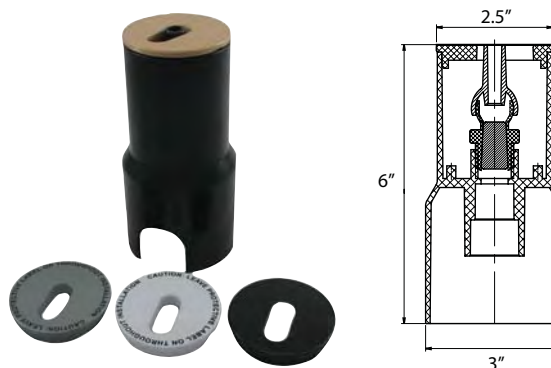
Deck Jet (Non Adjustable)

25597-000

50 per box

Features:

- Individually Packaged
- Includes body, moveable nozzles (single & dual streams) and four colored, round decorative caps (white, black, gray, tan)
- Cap is 2.5" diameter



Deck Jet Cover, Round

25597-000-020

Sold Separately



Deck Jet Cover
3.5" Square
25597-000-120



Deck Jet Cover
Round, Solid Brass
25597-000-220

Included with Deck & Wall Jets



Deck Jet Non-Adjustable
Nozzle Assy
25597-000-900



Deck Jet Dual
Nozzle Assy
25597-100-900

Wall Jets

Using the same technology as the CMP deck jet, the wall jet uses the same nozzle in a body easier to use in a wall situation. Face is round for easier installation. (Decorative caps are square)

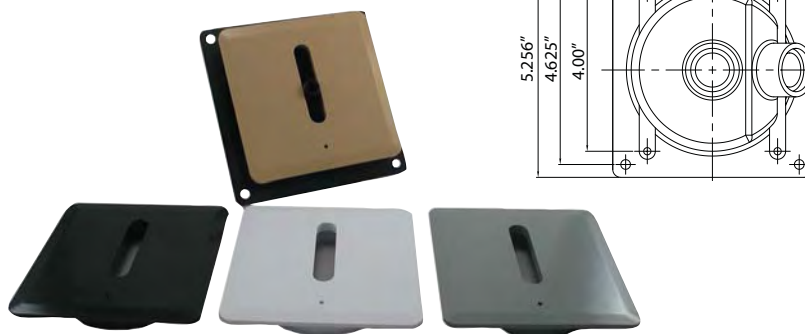
Wall Jet (Non Adjustable)

25598-000

18 per box

Features:

- Individually Packaged
- Includes body, plumbing coupling, moveable nozzles (single & dual streams) and four colored square decorative caps (white, black, gray, tan)
- 4" Hole Size



Wall Jet Cover

25598-000-020

Deck Jet and Wall Jet Specifications

GPM	3 GPM	4 GPM	5 GPM
Feet of Head	3.9	7.9	11
Height of Water Stream	3 Ft	6.5 Ft	10 Ft

Adjustable Deck & Wall Jets

Adjustable Deck Jets

Adjust the stream at the nozzle for the desired look. Designed for residential and commercial pools, this water feature has an eyeball nozzle hidden from view by decorative cap. Four different cap colors are included with each deck jet. A variety of plumbing choices makes this deck jet easier to install. Only uses 3-5 GPM for a stream of water up to 10 feet high. Made for simple installation and trouble-free operation.

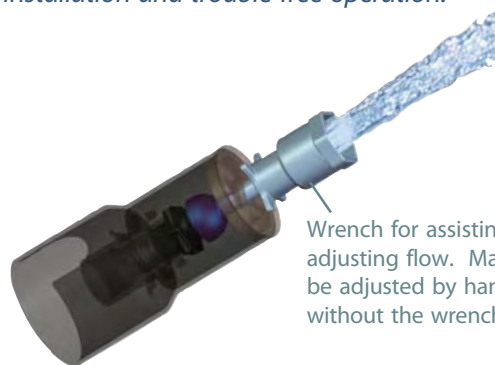
Deck Jet (Adjustable)

25597-200

50 per box

Features:

- **Only Deck Jet that can be adjusted at the nozzle while running!!**
- Individually Packaged
- Includes body, moveable adjustable nozzle and four colored, round decorative caps (white, black, gray, tan)



Wrench for assisting in adjusting flow. May also be adjusted by hand without the wrench.



Deck Jet Cover, Round
25597-000-020



Deck Jet Cover, 3.5" Square
25597-000-120
(Sold Separately)



Deck Jet Cover Round, Solid Brass
25597-000-220
(Sold Separately)



Deck Jet Adjustable Nozzle Assy
25597-200-900



Deck Jet Adjustment Wrench
25597-304-010

Adjustable Wall Jets

Using the same technology as the CMP deck jet, the wall jet uses the same nozzle in a body easier to use in a wall situation. Face is round for easier installation. (Decorative caps are square)



Wall Jet Cover
25598-000-020

Wall Jet (Adjustable)

25598-200

18 per box

Features:

- **Only Wall Jet that can be adjusted at the nozzle while running!!**
- Individually Packaged
- Includes body, plumbing coupling, moveable adjustable nozzle and four colored square decorative caps (white, black, gray, tan)

- Use adjustable flow nozzle for fine tuning. We recommend using a ball valve to control jets.

PATENT PENDING



Toll-Free: 800.733.9060 or Visit Us Online @ www.c-m-p.com

2011

Fiberglass Pool Wall Jet

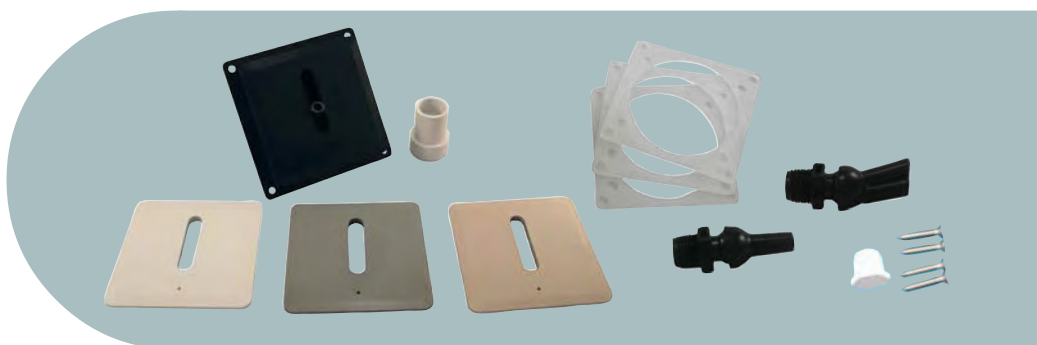
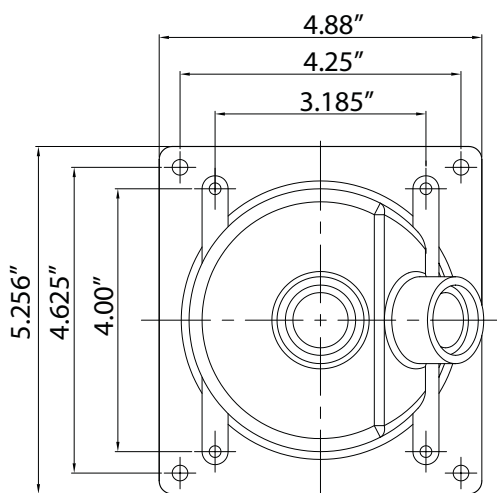
Using the same technology as the CMP deck jet, the Fiberglass Pool Wall Jet uses the same nozzle with a body that is easier to use in a fiberglass wall application. Face is round for easier installation. (Decorative caps are square).

Fiberglass Pool Wall Jet

1 per box

25598-900

- Includes Face Plates, Body, Spacer Gaskets, Plug, Screws, Plumbing Adapter, Single and Dual Stream Nozzles
- 4" Hole Size



Deck Jet and Wall Jet Specifications

GPM	3 GPM	4 GPM	5 GPM
Feet of Head	3.9	7.9	11
Height of Water Stream	3 Ft	6.5 Ft	10 Ft