



Duro-Beam Diving Board  
La Mesa / Los Arcos Stand

## **DIVING BOARD**

### **INSTALLATION MANUAL**

#### **WARNING!**

This INTER-FAB diving board shall be installed only by a professional swimming pool contractor or with the direct supervision of a licensed professional engineer or architect. Diving boards may be installed only on swimming pools properly designed for their use.

Diving boards improperly installed can be very dangerous to the user resulting in possible serious head and/or spinal column injury, including the death of the user.

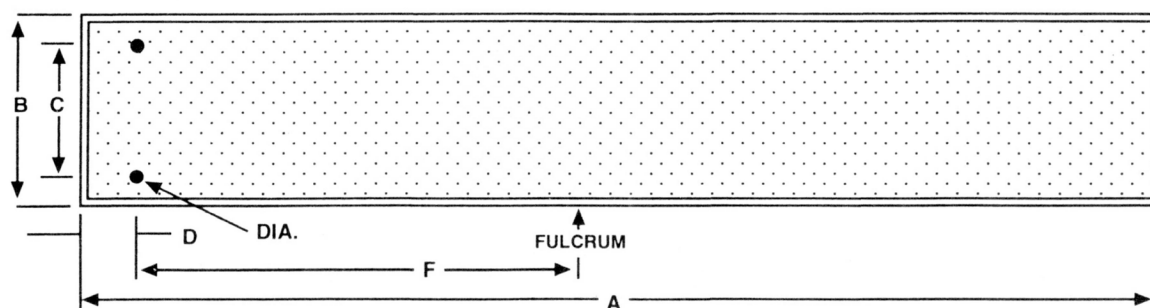
It is very important that diving boards be installed in strict accordance with the current “standard for residential (or commercial) swimming pool” published by National Spa & Pool Institute, 2111 Eisenhower Avenue, Alexandria, VA 22314.

In addition to the above standard, these installation instructions provided by INTER-FAB, Inc. must be diligently followed.

It is also important that any and all warnings provided with the diving board be strictly adhered to and posted in a conspicuous location. If none were provided, or they are misplaced, please purchase warning signs from your pool contractor or professional swimming pool supply store and post them in a location that the users of the diving board can see.

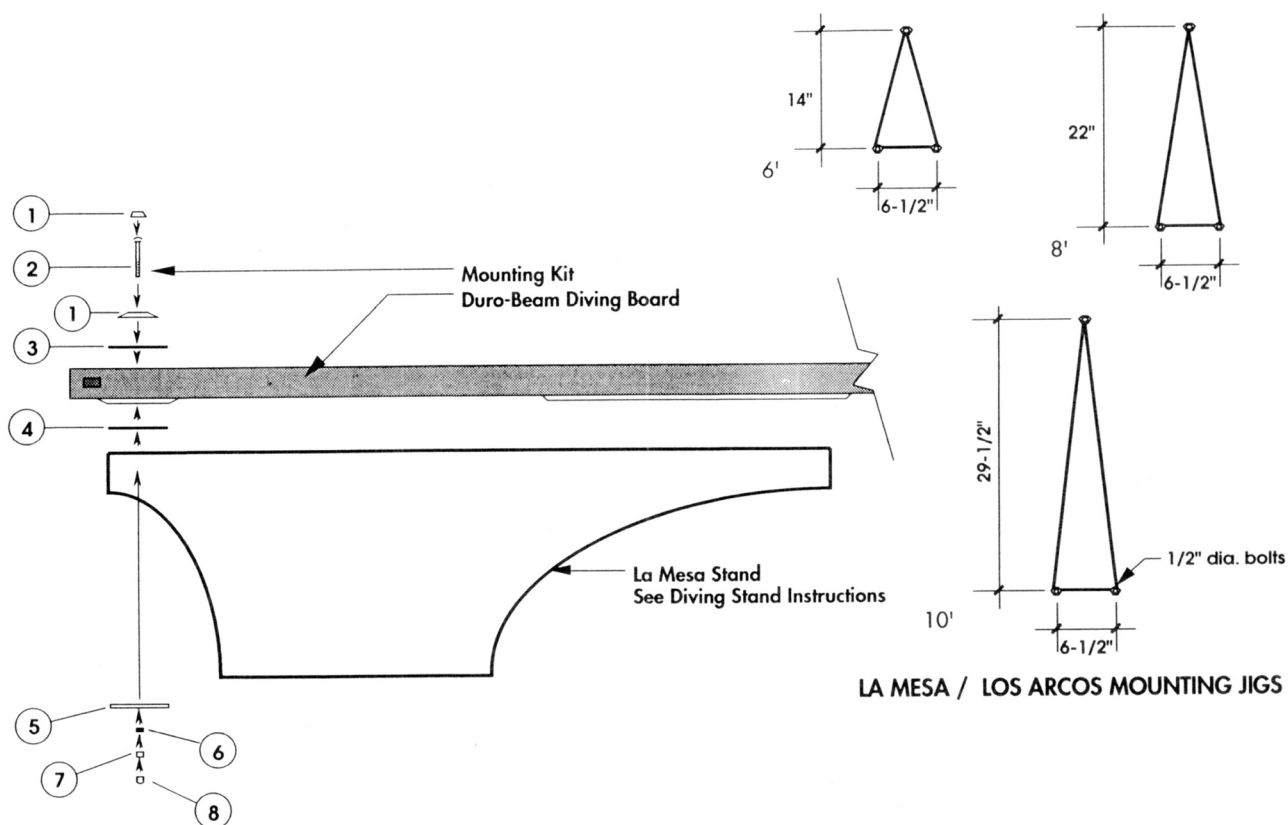
# DURO-BEAM DIVING BOARD

## LA MESA / LOS ARCOS STAND



MODEL		A	B	C	D	F	DIA.
6'	Duro-Beam	70.50"	17.25"	12.00"	4.00"	30.00"	19/32"
8'	Duro-Beam	94.50"	17.25"	12.00"	4.00"	40.00"	19/32"
10'	Duro-Beam	118.50"	17.25"	12.00"	4.00"	52.00"	19/32"

## DURO-BEAM W/ LA MESA STAND MOUNTING KIT



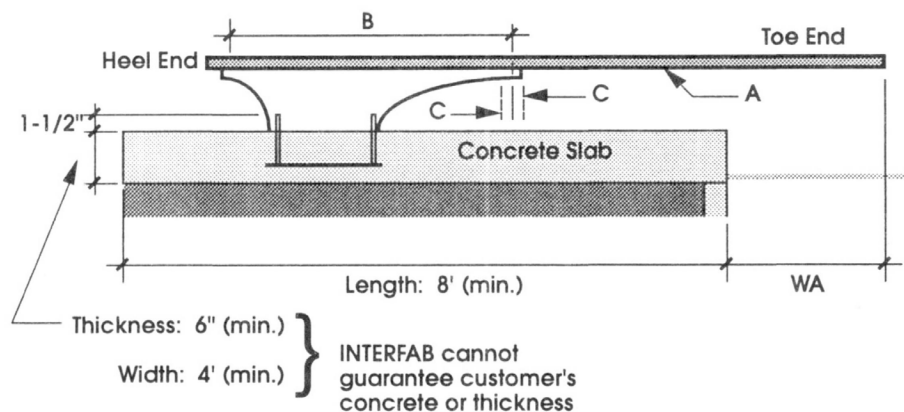
### BOARD MOUNTING KIT:

1. White Plastic Recessed Mounting Washer Assy. (2 ea.)
1. 1/2" x 4- 1/2" Carriage Bolt C/S Zinc Plated (2 ea.)
2. 1/2" x 2" Black Rubber Mounting Washer (2 ea.)
3. 1/2" x 2" Red Rubber Mounting Washer (2 ea.)
4. 1/2" x 2" Flat Washer C/S Zinc Plated (2 ea.)
5. 1/2" Lock Washer C/S Zinc Plated (2 ea.)
6. 1/2" Hex Nut C/S Zinc Plated (2 ea.)
7. 1/2" White Rubber Nut Cap (2 ea.)

### TIGHTENING SCHEDULE:

1. Secure stand to jig with anchor hex nuts at 40-50 ft-lbs.
2. Secure board to stand mounting hex nuts at 20-25 ft-lbs.

## DURO-BEAM W/ LA MESA STAND



A - Length	6'	8'	10'
B - Fulcrum	30"	40"	52"
C - Tolerance	4"	4"	5"

NOTE:  
Refer to this standard for proper pool overhang (WA).

All diving board installation should be made in accordance with National Spa & Pool Institute "Standards for Residential Pools" dated April 25, 1995. Copies of this standard are available from, NSPI, 2111 Eisenhower Avenue, Alexandria, VA 22314. Refer to this standard for proper board overhang (WA) for your pool. Below dimensions for guide only.

5.10.1 **Point A:** Point A is the point from which all other forward dimensions of width; length and depth are then established for Minimum Diving Water Envelope. If the tip of the diving board or diving platform overhang is located at a distance of WA or greater from the deep end wall and the water depth at that location is equal to or greater than the water depth requirement at Point A **See Table 2**, then the point on the water surface directly below the center of the tip of the diving platform shall be identified as Point A.

5.10.2 **Location of Point A:** The minimum Diving Water Envelope dimensions for pools manufactured diving equipment shall be taken from Point A as shown in **Figure 5**. Point A shall be defined as the point on the water surface where the water depth is required for Point A and is provided at a distance of WA as shown in **Table 2** from the deep end wall. The center of the tip of the diving board shall be located directly above point A.

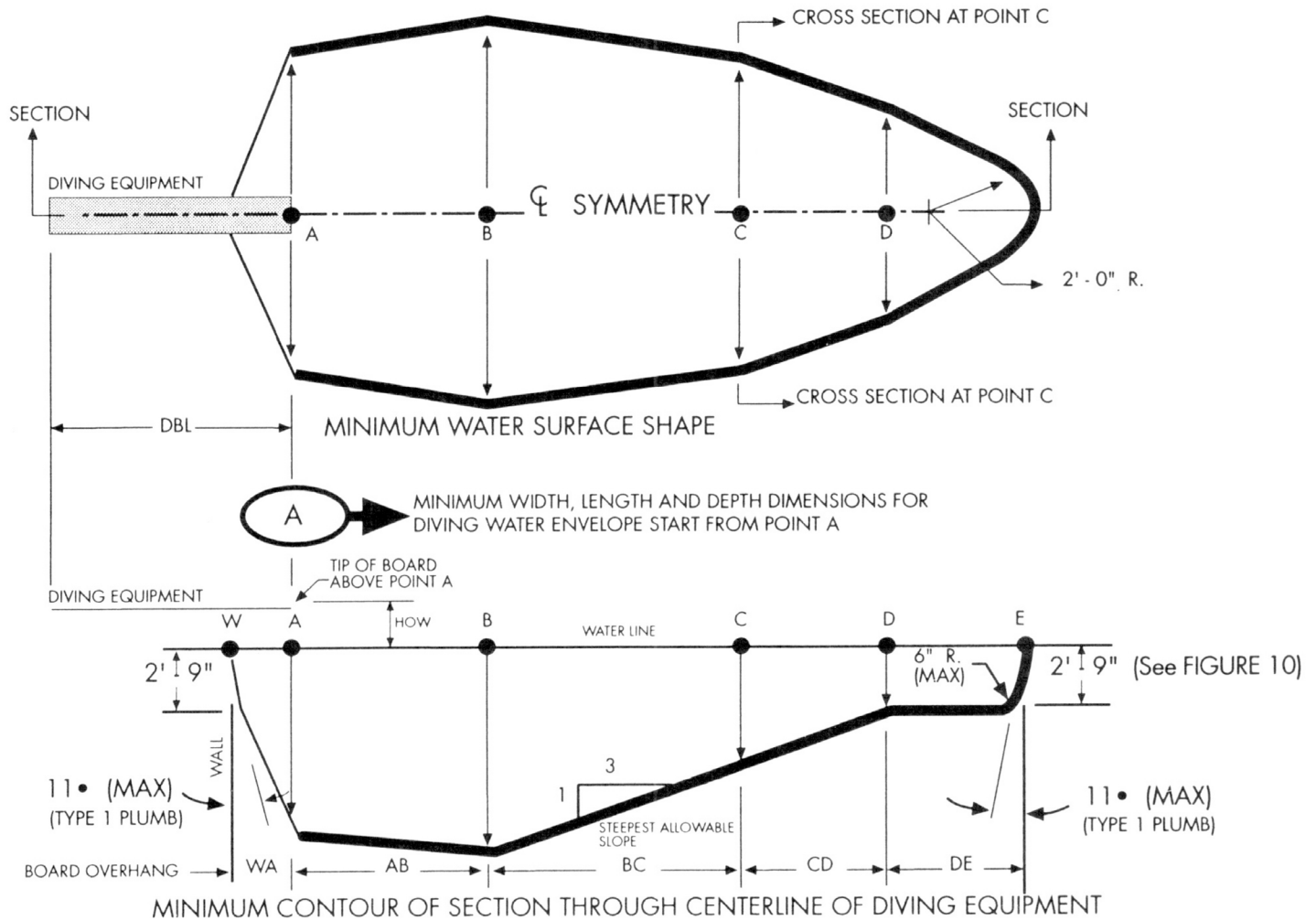
**Refer to NSPI Guideline for specific design configurations**

### Note:

1. **See Appendix J for individual Pool Type Minimum Diving Envelopes.**
2. \* Minimum length between points CD may vary based upon water depth at point D and the slope between C & D.
3. \*\* **ABBREVIATIONS: DBL=DIVING BOARD LENGTH, DB=DIVING BOARD, JP=JUMP BOARD, HOW=HEIGHT OVER WATER.**
4. **IMPORTANT: The walls of a Type I Pool, when defining the Maximum Diving Water Envelope shall be plump.**
5. Figure 5 drawings are not to scale.
6. All dimensions are minimum, except where noted as maximum.
7. One half (½) the width shown at each point shall be available on each side of the diving equipment centerline.
8. Minimum water depth under tip of diving board (point A) is important to maintain.

# NSPI – POOL SPECIFICATIONS FOR DIVING EQUIPMENT

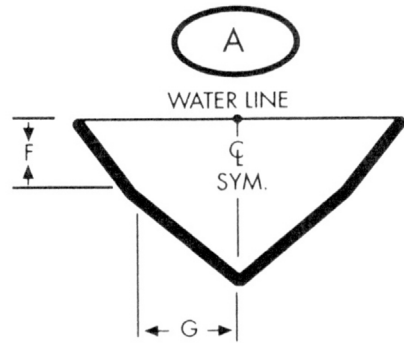
**Figure 5**  
**Minimum Diving Water Envelope**



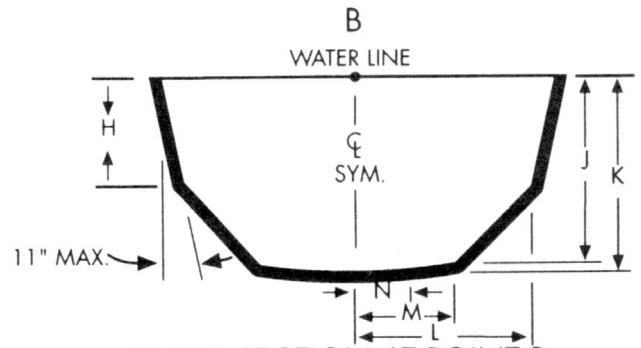
POOL TYPE	MAX. DIVING BOARD LENGTH	MAX. HEIGHT OVER WATER	MINIMUM DEPTHS AT POINT				MINIMUM WIDTHS AT POINT				MINIMUM LEGTHS BETWEEN POINTS					
	DBL **	HOW **	A	B	C	D	A	B	C	D	WA	AB	BC	CD*	DE	WE
0	DIVING EQUIPMENT IS PROHIBITED															
I	6' DB/6' JB	20'	6'-0"	7'-6"	5'-0"	2'-9"	10'-0"	12'-0"	10'-0"	8'-0"	1'-6"	7'-0"	7'-6"	VARIABLES	6'-0"	28'-9"
II	8' DB/6' JB	20'	6'-0"	7'-6"	5'-0"	2'-9"	12'-0"	15'-0"	12'-0"	8'-0"	1'-6"	7'-0"	7'-6"	VARIABLES	6'-0"	28'-9"
III	10' DB/8' JB	26'	6'-10"	8'-0"	5'-0"	2'-9"	12'-0"	15'-0"	12'-0"	8'-0"	2'-0"	7'-6"	9'-0"	VARIABLES	6'-0"	31'-3"
IV	10' DB/8' JB	30'	7'-8"	8'-6"	5'-0"	2'-9"	15'-0"	18'-0"	15'-0"	9'-0"	2'-6"	8'-0"	10'-6"	VARIABLES	6'-0"	33'-9"
V	12' DB/8' JB	40'	8'-6"	9'-0"	5'-0"	2'-9"	15'-0"	18'-0"	15'-0"	9'-0"	3'-0"	9'-0"	12'-6"	VARIABLES	6'-0"	36'-9"

# NSPI – POOL SPECIFICATIONS FOR DIVING EQUIPMENT

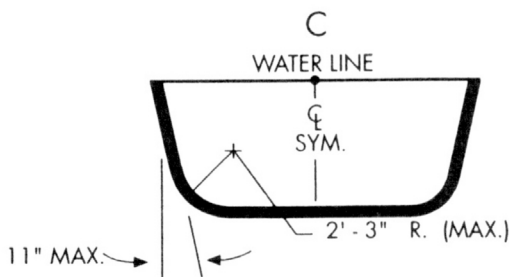
**Figure 5**  
**Minimum Diving Water Envelope**



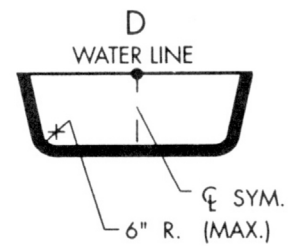
CROSS SECTION AT POINT A



CROSS SECTION AT POINT B



CROSS SECTION AT POINT C



CROSS SECTION AT POINT D

CROSS SECTIONAL DIMENSIONS AT POINT A			CROSS SECTIONAL DIMENSIONS AT POINT B					POOL TYPE
F	G	H	J	K	L	M	N	
DIVING EQUIPMENT IS PROHIBITED								0
2'-9"	5'-0"	4'-0"	7'-2 ½"	7'-6"	6'-0"	3'-9"	2'-1 ½"	I
2'-9"	3'-10"	4'-2"	7'-2 ½"	7'-6"	6'-8"	3'-9"	2'-1 ½"	II
2'-9"	4'-4 ¾"	4'-4 ½"	7'-5 ½"	8'-0"	6'-7"	3'-11 ½"	1'-7" ½"	III
2'-9"	5'-10 ½"	3'-10"	7'-8"	8'-6"	8'-3"	5'-7"	2'-7"	IV
2'-9"	6'-2"	3'-11 ½"	7'-9 ½"	9'-0"	8'-2 ½"	5'-9"	2'-1"	V

**Refer to Figure 5 to ensure  
Minimum Diving Envelope Compliance**

DIVING BOARD LENGTH ↓	WA BOARD OVERHANG →	18"	24"
	-B-		
6'	Distance from water Edge to jig front bolt →	28"	22"
8'		43"	37"
10'		NA	53"

## INSTALLATION INSTRUCTIONS

1. **6' diving board to be installed only on 6' stand.  
8' diving board to be installed only on 8' stand.  
10' diving board to be installed only on 10' stand.**
2. Using above chart, select proper board overhang.
3. Check anchor jig on diving stand to insure proper fit.
4. Install jig in minimum 6" concrete with front bolt of jig at proper distance (dimension "B") from pool water edge.
5. Allow a minimum of 1 ½" of anchor bolts to project above concrete.
6. Concrete under diving stand must be flat and level.
7. After concrete is poured and cured minimum of 7 days, remove protective coating from jig bolts. Place diving stand on jig and fasten securely using flat washer, lock washer and hex nut on each bolt.
8. Place board on stand and fasten securely using bolts, flat washers, and hex nuts (furnished with diving board).
9. **Only one person on diving board at a time, with a maximum weight limit of 250 lbs.**

## **LIMITED WARRANTY**

Inter-Fab, Inc. warrants all products to be free of defects in manufacturing, materials or workmanship for three (3) years from date of end user purchase. Products which fail or become defective during the warranty period, except as a result of improper installation, improper use or care, negligence or natural accidents (acts of God) will be repaired or replaced at Inter-Fab's option at no charge.

**echoes of nature™** products are individually handcrafted and painted by skilled artisans. Therefore, dimensional differentials +/- 1 inch and color variations are normal and will be excluded as grounds for warranty replacement.

To enact this warranty, product owner or representative must notify Inter-Fab, Inc. (or its wholesale agent) in writing, giving a full description of the nature of the product defect or failure along with proof of purchase date and serial number of the product.

Inter-Fab, Inc. reserves the right to physically inspect damaged or defective products or components if necessary to determine the cause of the damage or defect, prior to authorizing repair or replacement of its products.

***INTER-FAB***  
I N C O R P O R A T E D

3050 S. Alvernon Way • Tucson, AZ 85713  
520-790-7040 • 800-737-5386 • Fax 520-790-7127  
[www.inter-fab.com](http://www.inter-fab.com)