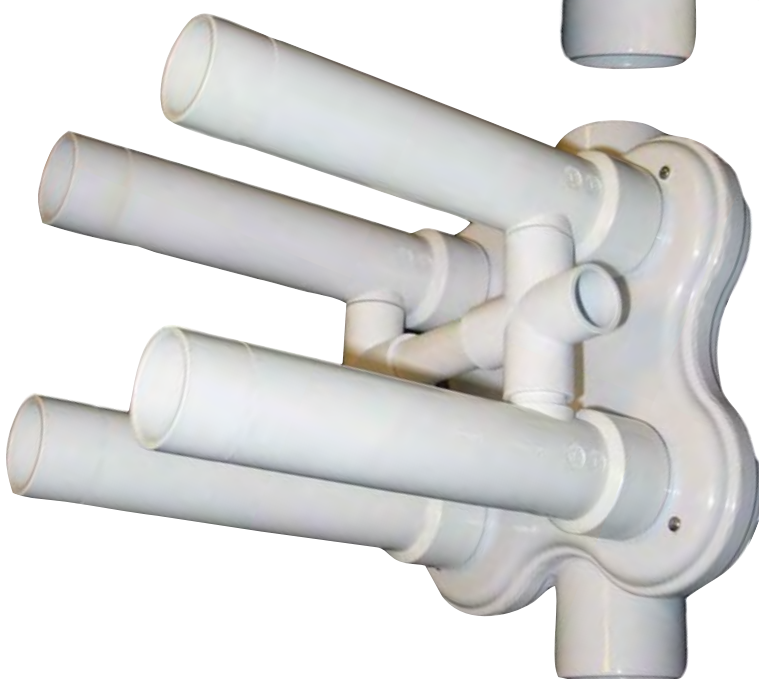


## JP4 Jet Manifold Pack

### Jet Manifold 4-Pack Single Water Port

23308-910

- 70-80 GPM\*
- Single - Water on Bottom
- 2" Socket (Water) x 3/4" Socket (Air)
- Patent #6,804,841



### Jet Manifold 4-Pack Dual Water Ports

23308-900

- 70-80 GPM\*
- Dual - Water on Side
- 2" Socket (Water) x 3/4" Socket (Air)
- Patent #6,804,841

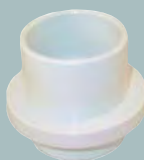
\*For 55 to 65 GPM Use (4) Nozzle Reducers (Part #23302-000-040)

\*For 45 to 55 GPM Use (4) Nozzle Reducers (Part #23302-100-040)

### Jet Pack Fittings



Wall Fitting  
25523-100



Water Stop  
Adapter  
25575-500



Eyeballs  
25552



Deluxe Rotating  
Massage Jet  
23315-030

## JP4 Jet Manifold Pack

*This is a patented system for even water distribution. This prevents under-performing jets associated with plumbing high and low.*



**For A Deluxe "Power Seat"**

Patent #6,804,841