

# Tankless Parts and Accessories

## Condensing Tankless Supplement

Release October 1, 2010  
For Tankless Parts Catalog TKPP-101-10 Rev.1

### Condensing Tankless *venting*

PVC Vent Kits for RTGH-84DV, and RTGH-95DV



#### Horizontal Vent Termination

- SP20286 for 3-Inch PVC  
RXGY-G01
- SP20285 for 2-Inch PVC  
RXGY-G02

11-3/4" Wide, 8" Tall, 2-1/2" Deep  
Fits PVC, ABS, piping.  
Offers for a clean installation of the  
intake and exhaust pipes of the  
condensing tankless water heater.



#### Horizontal or Vertical Concentric Vent Termination

- SP20245 for 3-Inch PVC  
RXGY-E03A

11-3/4" Wide, 8" Tall, 2-1/2" Deep  
Fits PVC, ABS, piping.  
Offers for a clean installation of the  
intake and exhaust pipes of the  
condensing tankless water heater.

### Condensing Tankless *accessories*

#### Recess Boxes



Recess Boxes enhance an outdoor  
installation by protecting the tankless  
unit from damage and tampering. It  
also provides additional protection  
from extreme weather. These boxes  
come in an grey finish and can be  
painted by the customer.

- RTG20226  
For the RTGH-95X and RTGH-84X  
Rough-in Dimensions:  
46" High, 16-1/2" Wide, 9-1/2" Deep

#### Pipe Covers

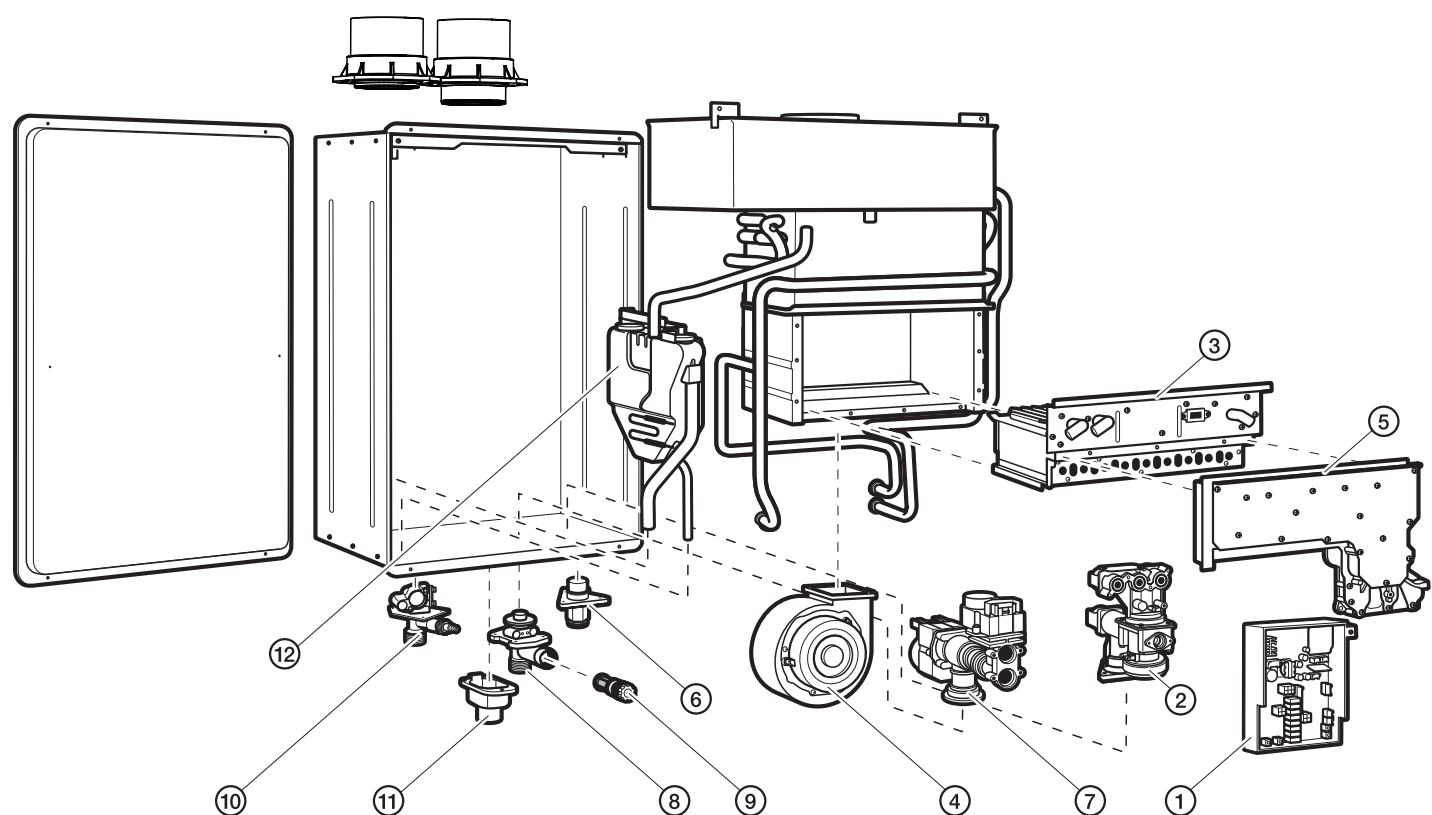


Cosmetic Pipe Covers enhance  
an indoor or outdoor installation  
by concealing the pipe beneath  
the water heater. It provides  
protection from tampering and  
weather conditions. These covers  
come in an grey finish and can be  
painted by the customer.

- RTG20227 (grey)  
For the RTGH-95DV, RTGH-95X,  
RTGH-84DV, and RTGH-84X

For Additional Parts and Accessories, and parts and accessories for other Rheem Tankless products please see the  
Tankless Parts and Accessories 2010 Catalog TKPP-101-10 Rev.1 for parts and accessories to specific models.  
For parts not listed, please contact Customer Service 1-800-621-5622.

# Parts for RTGH-84DV, RTGH-95DV series



Rheem Part #	Description	RTGH-84DV	RTGH-95DV
Program Chip			
RTG20228T	Natural Gas Program Chip	•	
RTG20228U	LP Gas Program Chip	•	
RTG20228N	Natural Gas Program Chip		•
RTG20228P	LP Gas Program Chip		•
Commercial Conversion Kits			
RTG20225A	Natural Gas Commercial Conversion Kit	•	
RTG20225B	LP Gas Commercial Conversion Kit	•	
RTG20224A	Natural Gas Commercial Conversion Kit		•
RTG20224B	LP Gas Commercial Conversion Kit		•

## Parts for RTGH-84DV, RTGH-95DV series

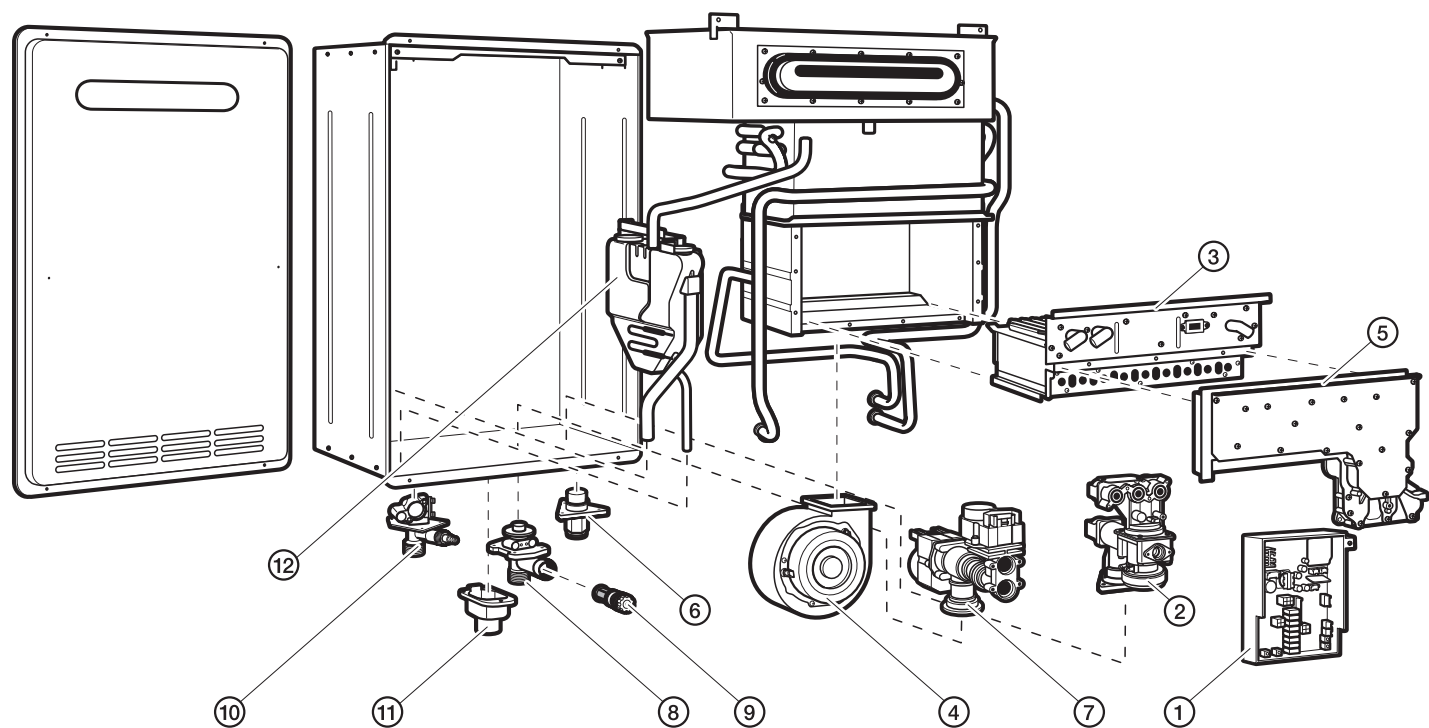
Ref #	Rheem Part #	Description	RTGH-84DV	RTGH-95DV
1	RTG20223P	Control Board	•	•
	RTG20223D	Inlet Thermistor - White	•	•
	RTG20223G	Heat Exchanger Thermistor - Green	•	•
	RTG20223H	Outlet Thermistor - Red	•	•
	RTG20223J	Ambient Thermistor - Blue	•	•
	RTG20223L	Thermostat Assembly	•	•
	RTG20223W	Thermistor Wiring Harness	•	•
2	RTG20212V	Gas Control Valve	•	•
	RTG20223V	Gas Control Wiring Harness	•	•
3	RTG20212D	Burner Assembly	•	•
	RTG20164U	Igniter Coil	•	•
	RTG20212M	Igniter Rod (IG)	•	•
4	RTG20212K	Blower Motor	•	•
	RTG20223K	Blower Case	•	•
5	RTG20212F	Burner Manifold LP	•	•
5	RTG20212X	Burner Manifold NAT	•	•
	RTG20212G	Flame Rod FL-1	•	•
	RTG20212P	Flame Rod Wire	•	•
	RTG20223C	Flame Rod FL-2	•	•
	RTG20223M	Flame Rod Wire No.S	•	•
6	RTG20164K	Gas Inlet Connector 3/4	•	•
7	RTG20223E	Water Control Body	•	•
	RTG20164M	Bypass Assembly	•	•
8	RTG20164J	Water Inlet Connector 3/4	•	•
10	RTG20074CE	Hot Water Outlet Connector 3/4	•	•
11	RTG20164AA	Remote Control Terminal Block	•	•
12	RTG20223F	Neutralization Replacement Kit	•	•
	RTG20223B	Front Cover - No Labels or Branding	•	•
	TBA	Exhaust Vent Outlet Connector - PVC	•	•
	TBA	Air Intake Inlet Connector - PVC	•	•

### Accessories

Venting	SP20286 (RXGY-G01) 3-Inch Horizontal Termination Kit
	SP20285 (RXGY-G02) 2-Inch Horizontal Termination Kit
	SP20245 (RXGY-E02) 3-Inch Concentric Horiz/Vertontal Termination Kit
Remote Controls	RTG20006DW UMC-117 Main Remote Control
	RTG20006DU USC1-117 Bath Remote Control
	RTG20006DV USC2-117 Second Bath Remote Control
Pipe Covers	RTG20227 Pipe Cover (grey)
Service Valves	RTG20220 Tankless Service Valve Kit with Relief Valve
	RTG20220AB Tankless Service Valve Kit with Relief Valve - California Code
Relief Valve	AP12993C Pressure Relief Valve
EZ-Link™ Cable	RTG20040 6FT EZ-Link™ Cable

See Page 3 of TKPP-101-2010 for Manifold Controller Information

# Parts for RTGH-84X, RTGH-95X series



Rheem Part #	Description	RTGH-84X	RTGH-95X
<b>Program Chip</b>			
RTG20228V	Natural Gas Program Chip	•	
RTG20228W	LP Gas Program Chip	•	
RTG20228R	Natural Gas Program Chip		•
RTG20228S	LP Gas Program Chip		•
<b>Commercial Conversion Kits</b>			
RTG20225C	Natural Gas Commercial Conversion Kit	•	
RTG20225D	LP Gas Commercial Conversion Kit	•	
RTG20224C	Natural Gas Commercial Conversion Kit		•
RTG20224D	LP Gas Commercial Conversion Kit		•

## Parts for RTGH-84X, RTGH-95X series

Ref #	Rheem Part #	Description	RTGH-84X	RTGH-95X
1	RTG20223P	Control Board	•	•
	RTG20223D	Inlet Thermistor - White	•	•
	RTG20223G	Heat Exchanger Thermistor - Green	•	•
	RTG20223H	Outlet Thermistor - Red	•	•
	RTG20223J	Ambient Thermistor - Blue	•	•
	RTG20223W	Thermistor Wiring Harness	•	•
2	RTG20212V	Gas Control Valve	•	•
	RTG20223V	Gas Control Wiring Harness	•	•
3	RTG20212W	Burner Assembly	•	•
	RTG20164U	Igniter Coil	•	•
	RTG20212M	Igniter Rod (IG)	•	•
4	RTG20212AB	Blower Motor	•	•
	RTG20212AC	Blower Case	•	•
5	RTG20212F	Burner Manifold LP	•	•
5	RTG20212X	Burner Manifold NAT	•	•
	RTG20212G	Flame Rod FL-1	•	•
	RTG20212P	Flame Rod Wire	•	•
6	RTG20164K	Gas Inlet Connector 3/4	•	•
7	RTG20223E	Water Control Body	•	•
	RTG20164M	Bypass Assembly	•	•
8	RTG20164J	Water Inlet Connector 3/4	•	•
10	RTG20074CE	Hot Water Outlet Connector 3/4	•	•
11	RTG20164AA	Remote Control Terminal	•	•
12	RTG20223F	Neutralization Kit Set	•	•
	RTG20223A	Front Cover - No Labels or Branding	•	•

### Accessories

Remote Controls	RTG20006DW UMC-117 Main Remote Control
	RTG20006DU USC1-117 Bath Remote Control
	RTG20006DV USC2-117 Second Bath Remote Control
Pipe Covers	RTG20227 Pipe Cover (grey)
Recess Box	RTG20226 Recess Box (grey)
Service Valves	RTG20220 Tankless Service Valve Kit with Relief Valve
	RTG20220AB Tankless Service Valve Kit with Relief Valve - California Code
Relief Valve	AP12993C Pressure Relief Valve
EZ-Link™ Cable	RTG20040 6FT EZ-Link™ Cable

See Page 3 of TKPP-101-2010 for Manifold Controller Information

# Condensing Tankless Model Cross Reference

Rheem	RUUD	Richmond	EcoSense	Paloma
RTGH-95DVN	RUTGH-95DVN	RMTGH95DVN	ECOH200DVN	PHH-32RDVN
RTGH-95DVP	RUTGH-95DVP	RMTGH95DVP	ECOH200DVP	PHH-32RDVP
RTGH-95XN	RUTGH-95XN	RMTGH95XN	ECOH200XN	PHH-32ROFN
RTGH-95XP	RUTGH-95XP	RMTGH95XP	ECOH200XP	PHH-32ROFP
RTGH-84DVN	RUTGH-84DVN	RMTGH84DVN	ECOH160DVN	PHH-25RDVN
RTGH-84DVP	RUTGH-84DVP	RMTGH84DVP	ECOH160DVP	PHH-25RDVP
RTGH-84XN	RUTGH-84XN	RMTGH84XN	ECOH160XN	PHH-25ROFN
RTGH-84XP	RUTGH-84XP	RMTGH84XP	ECOH160XP	PHH-25ROFP

## Tankless Parts Notes

---

---

---

---

---

---

---

---

\_\_\_\_\_ **Rheem Customer Service**

\_\_\_\_\_ Division Office ..... 334-260-1500

\_\_\_\_\_ Parts, Customer Service, Warranty ....1-800-621-5622

\_\_\_\_\_ Fax .....1-800-535-9538

\_\_\_\_\_ Email .....parts@rheem.com

\_\_\_\_\_ Technical Service .....1-800-HEATER3  
(1-800-432-8373)

\_\_\_\_\_ Email .....techserv@rheem.com

\_\_\_\_\_ Website .....www.rheem.com

See Tankless Parts and Accessories 2010 Catalog TKPP-101-10 Rev.1 for parts and accessories to specific models.  
For parts not listed, please contact Customer Service 1-800-621-5622.

*In keeping with its policy of continuous progress  
and product improvement, Rheem reserves the  
right to make changes without notice.*

**Tankless water heaters**  
**Endless hot water**

Rheem Water Heating  
101 Bell Road  
Montgomery, AL 36117-4305  
www.rheem.com



*relax*  
It's Rheem®